

\$182,700 - 140 Meadow Ponds Drive, Rural Clearwater County

MLS® #A1021074

\$182,700

0 Bedroom, 0.00 Bathroom,
Land on 1.40 Acres

N/A, Rural Clearwater County, Alberta

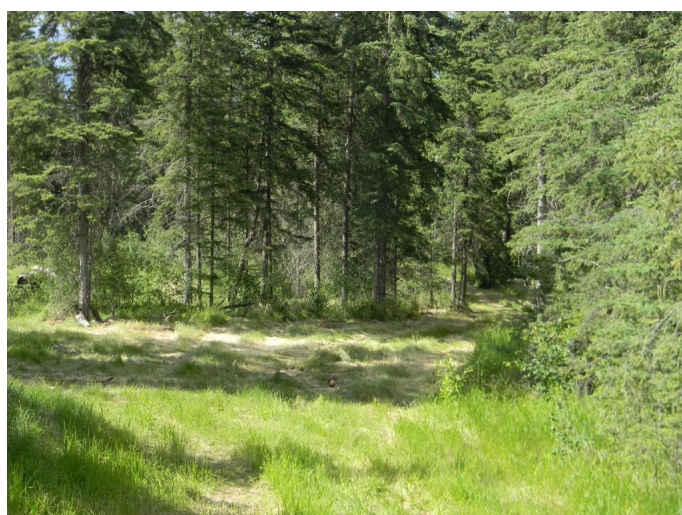
GST included in the listing price.....Welcome to the quaint community of Diamond Willow Estates. This exclusive, executive subdivision located only minutes from Rocky Mountain House provides you both space and tranquility. Living in the country has never been easier. Communal water and waste-water services are maintained on your behalf. For those who crave space and privacy, each treed lot offers services to the lot line, and pavement to your driveway. Come build your house and make it your home!

Essential Information

MLS® #	A1021074
Price	\$182,700
Bathrooms	0.00
Acres	1.40
Type	Land
Sub-Type	Land
Status	Active

Community Information

Address	140 Meadow Ponds Drive
Subdivision	N/A
City	Rural Clearwater County
County	Clearwater County
Province	Alberta



Postal Code T4T 1A7

Additional Information

Date Listed August 31st, 2020

Days on Market 1655

Zoning Residential

Listing Details

Listing Office Royal LePage Tamarack Trail Realty

Data is supplied by Pillar 9â„¸ MLSÂ® System. Pillar 9â„¸ is the owner of the copyright in its MLSÂ® System. Data is deemed reliable but is not guaranteed accurate by Pillar 9â„¸. The trademarks MLSÂ®, Multiple Listing ServiceÂ® and the associated logos are owned by The Canadian Real Estate Association (CREA) and identify the quality of services provided by real estate professionals who are members of CREA. Used under license.