

\$4,800,000 - Range Road 292 W-4 R-29 T-26 S - Nw, Rural Rocky View County

MLS® #A2081159

\$4,800,000

0 Bedroom, 0.00 Bathroom,
Land on 160.00 Acres

NONE, Rural Rocky View County, Alberta

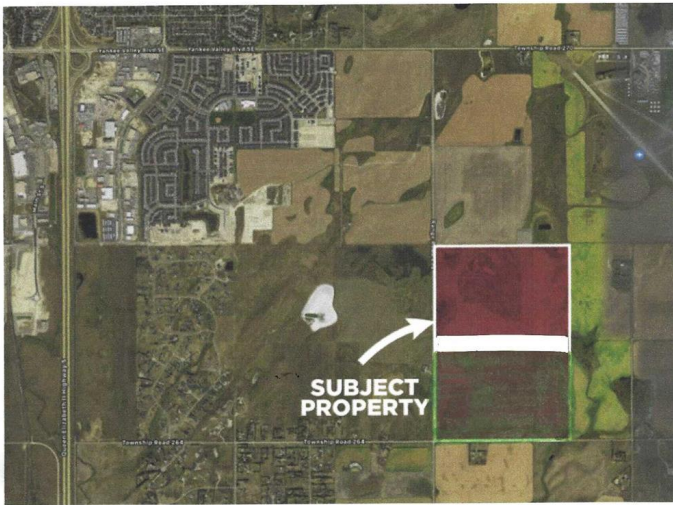
160 ACRES OR 64.7 HECTARES RAW LAND INSIDE BALZAC ANNEXATION. SOUTH EAST OF THE CITY OF AIRDRIE AND NEXT TO AIRDRIE AIRPORT. GREAT INVESTMENT LAND OR SUB-DIVISION POTENTIAL. East of Queen Elizabeth 11 Hwy - East on Township Road 270 - 1 km South on Range Road 292. South West of Airdrie Airport.- This land is extremely well situated to benefit from the expansion around it. With each major announcement, the land becomes more valuable. The MD of Rocky View has set records for development in an effort to meet strong real estate demand in the surrounding areas. Environmental Phase One & Site Plan completed

Essential Information

| | |
|-----------|-----------------|
| MLS® # | A2081159 |
| Price | \$4,800,000 |
| Bathrooms | 0.00 |
| Acres | 160.00 |
| Type | Land |
| Sub-Type | Commercial Land |
| Status | Active |

Community Information

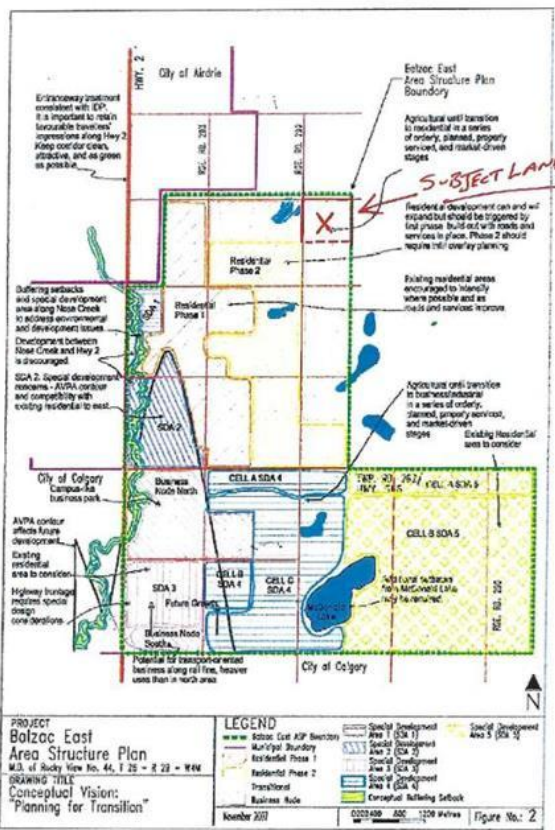
| | |
|-------------|-------------------------------------|
| Address | Range Road 292 W-4 R-29 T-26 S - Nw |
| Subdivision | NONE |



Balzac East Area Structure Plan

Schedule 'A' of Bylaw C-5177-2000

Figure 2: Conceptual Vision



| | |
|-------------|-------------------------|
| City | Rural Rocky View County |
| County | Rocky View County |
| Province | Alberta |
| Postal Code | T0M0E0 |

Additional Information

| | |
|----------------|----------------------|
| Date Listed | September 15th, 2023 |
| Days on Market | 684 |
| Zoning | AG |

Listing Details

| | |
|----------------|-----------------------------|
| Listing Office | RE/MAX REALTY PROFESSIONALS |
|----------------|-----------------------------|

Data is supplied by Pillar 9â„¢ MLS® System. Pillar 9â„¢ is the owner of the copyright in its MLS® System. Data is deemed reliable but is not guaranteed accurate by Pillar 9â„¢. The trademarks MLS®, Multiple Listing Service® and the associated logos are owned by The Canadian Real Estate Association (CREA) and identify the quality of services provided by real estate professionals who are members of CREA. Used under license.