

\$129,000 - Twp Rd 665a Range Road 153, Lac La Biche County

MLS® #A2121958

\$129,000

0 Bedroom, 0.00 Bathroom,
Land on 25.20 Acres

NONE, Lac La Biche County, Alberta

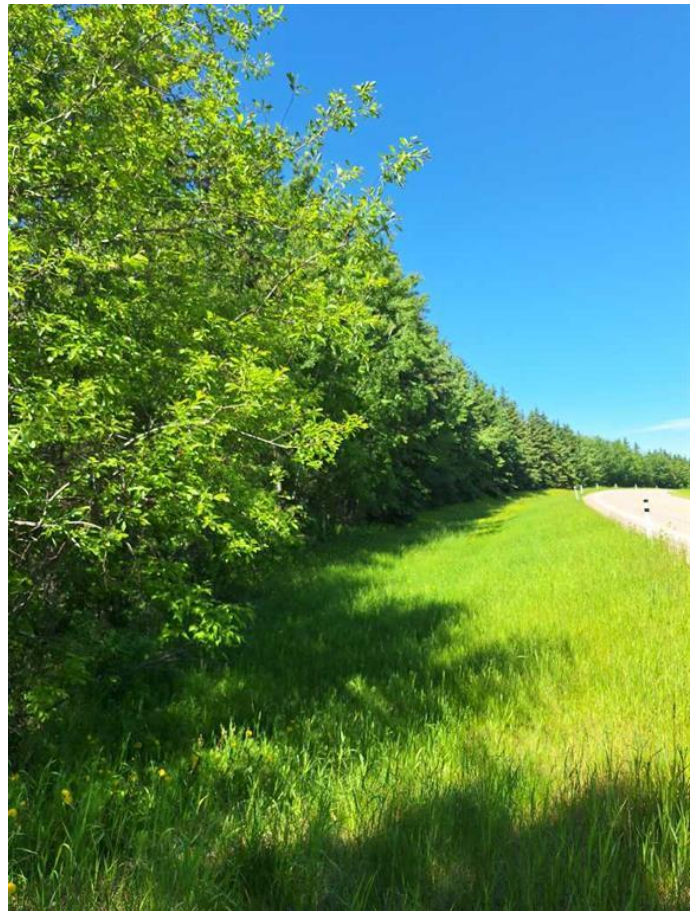
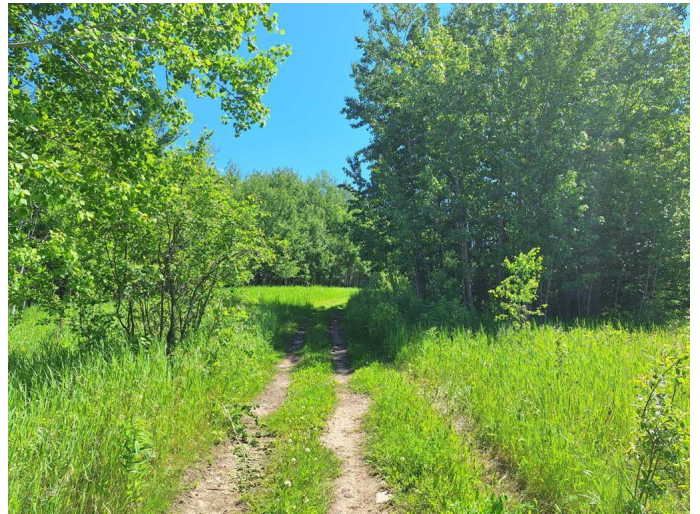
Great Spot to build, develop as a subdivision, use as a recreational getaway or just make more hay! 25 Plus private acres, with views of Misawawi and Tremblay Lake. Mature spruce trees, open hay field and trails make up this pretty piece. Power and gas are at the property line. Located on the Corner of the Misawawi subdivision which offers a nice mix of full time and recreational residence, a playground and endless scenic trails along the lake to take in the abundance of wildlife. Only 10 minutes from Lac La Biche by pavement! A must see!

Essential Information

MLS® #	A2121958
Price	\$129,000
Bathrooms	0.00
Acres	25.20
Type	Land
Sub-Type	Residential Land
Status	Active

Community Information

Address	Twp Rd 665a Range Road 153
Subdivision	NONE
City	Lac La Biche County
County	Lac La Biche County



Province	Alberta
Postal Code	T0A 2C2

Additional Information

Date Listed	April 10th, 2024
Days on Market	473
Zoning	Agricultural

Listing Details

Listing Office	RE/MAX LA BICHE REALTY
----------------	------------------------

Data is supplied by Pillar 9â„¸ MLSÂ® System. Pillar 9â„¸ is the owner of the copyright in its MLSÂ® System. Data is deemed reliable but is not guaranteed accurate by Pillar 9â„¸. The trademarks MLSÂ®, Multiple Listing ServiceÂ® and the associated logos are owned by The Canadian Real Estate Association (CREA) and identify the quality of services provided by real estate professionals who are members of CREA. Used under license.