

# \$300,000 - Lot 1 Widewater Drive, Widewater

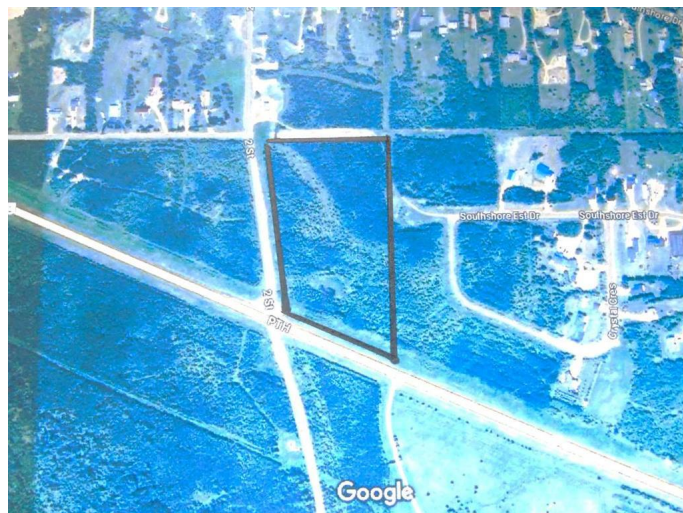
MLS® #A2134033

**\$300,000**

0 Bedroom, 0.00 Bathroom,  
Land on 13.66 Acres

NONE, Widewater, Alberta

13 acres of prime residential land on the Widewater Drive road. Only 12 minutes from Slave Lake, only minutes away from the lakeshore and boat launch of Lesser Slave Lake. Easy access to ATV trails and hunting areas south of highway 2, this parcel of land is in a strategic location for many outdoor and recreational activities. Can be built to suit any buyer's developmental tastes or the parcel can also be subdivided. Country living at it's finest and only minutes away from all the amenities!!



## Essential Information

MLS® #	A2134033
Price	\$300,000
Bathrooms	0.00
Acres	13.66
Type	Land
Sub-Type	Residential Land
Status	Active

## Community Information

Address	Lot 1 Widewater Drive
Subdivision	NONE
City	Widewater
County	Lesser Slave River No. 124, M.D. of
Province	Alberta
Postal Code	T0G2M0

## Additional Information



Date Listed	May 20th, 2024
Days on Market	294
Zoning	Residential - Vacant

### **Listing Details**

Listing Office           CENTURY 21 NORTHERN REALTY

Data is supplied by Pillar 9â,,ç MLSÂ® System. Pillar 9â,,ç is the owner of the copyright in its MLSÂ® System. Data is deemed reliable but is not guaranteed accurate by Pillar 9â,,ç. The trademarks MLSÂ®, Multiple Listing ServiceÂ® and the associated logos are owned by The Canadian Real Estate Association (CREA) and identify the quality of services provided by real estate professionals who are members of CREA. Used under license.