

\$45,000 - 2 Riddle Place, Out of Province_Alberta

MLS® #A2146916

\$45,000

0 Bedroom, 0.00 Bathroom,
Land on 0.53 Acres

NONE, Out of Province_Alberta,
Saskatchewan

Big River, Nature's Doorstep! Looking for land in the heart of lake country? The shores of Cowan Lake and great fishing are just steps away! This .53 acre lot in the MD of Big River, is a well treed lot and is just waiting for you to make it your own. Services are just across the street. The neighboring corner lot (LOT 1) is .59 acres and is also available.

Essential Information

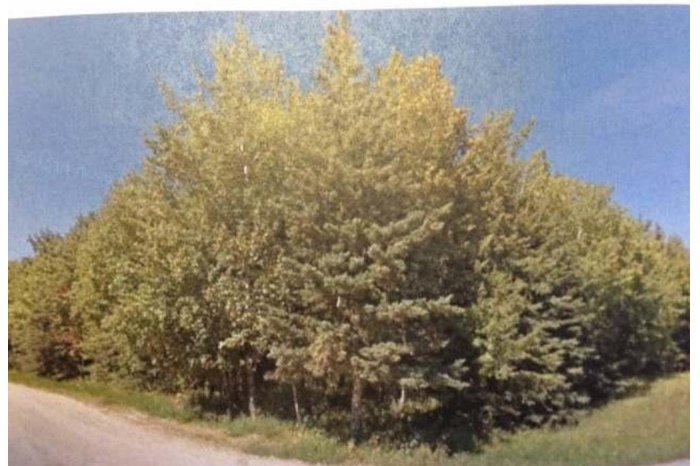
MLS® #	A2146916
Price	\$45,000
Bathrooms	0.00
Acres	0.53
Type	Land
Sub-Type	Residential Land
Status	Active

Community Information

Address	2 Riddle Place
Subdivision	NONE
City	Out of Province_Alberta
County	Out Of Board
Province	Saskatchewan
Postal Code	S0J 0E0

Exterior

Lot Description	Irregular Lot, Treed
-----------------	----------------------



Additional Information

Date Listed	July 4th, 2024
Days on Market	335
Zoning	RES

Listing Details

Listing Office	COLDWELL BANKER - CITY SIDE REALTY
----------------	------------------------------------

Data is supplied by Pillar 9â„¸ MLSÂ® System. Pillar 9â„¸ is the owner of the copyright in its MLSÂ® System. Data is deemed reliable but is not guaranteed accurate by Pillar 9â„¸. The trademarks MLSÂ®, Multiple Listing ServiceÂ® and the associated logos are owned by The Canadian Real Estate Association (CREA) and identify the quality of services provided by real estate professionals who are members of CREA. Used under license.