

\$145,000 - Lot #36 Wapiti River Sw-21-69-10-w6, Rural Grande Prairie No. 1, County of

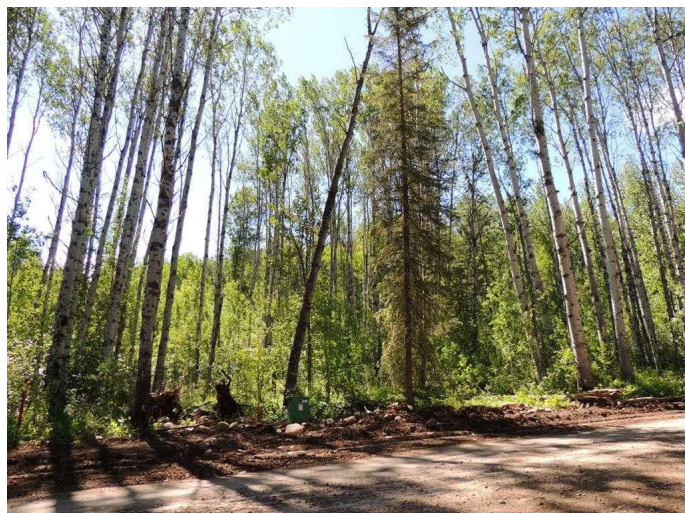
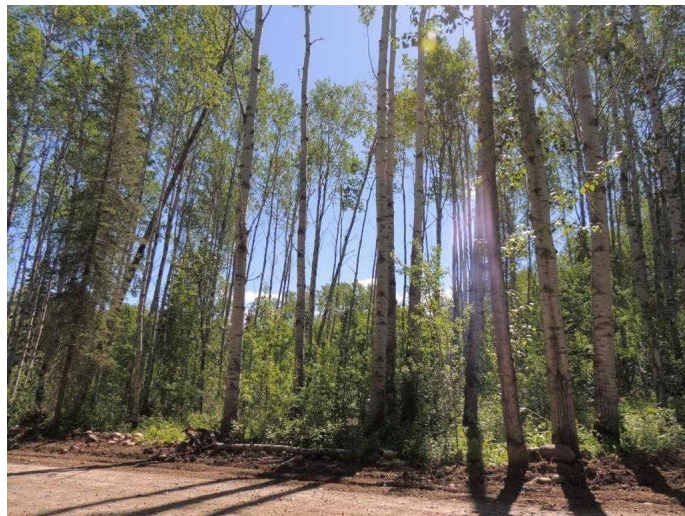
MLS® #A2151754

\$145,000

0 Bedroom, 0.00 Bathroom,
Land on 1.17 Acres

NONE, Rural Grande Prairie No. 1, County of,
Alberta

If you are looking for a tranquil spot to build the ultimate campsite or dream cabin; a place to get away from the hustle and bustle, this is the development for you. Beautiful recreational lots on the Wapiti River, an ideal property for any River boater with access to neighboring boat launch. The only development of it's kind in the Peace Country; with private titled lots, architectural guidelines and covenants. Location is stunning with mature trees, power at property lines, and well built all weather roads. There is common access to the sand and rock beach. Less than one hour from Grande Prairie and only 5.5 km off pavement!



Essential Information

MLS® #	A2151754
Price	\$145,000
Bathrooms	0.00
Acres	1.17
Type	Land
Sub-Type	Residential Land
Status	Active

Community Information

Address	Lot #36 Wapiti River Sw-21-69-10-w6
Subdivision	NONE
City	Rural Grande Prairie No. 1, County of



County	Grande Prairie No. 1, County of
Province	Alberta
Postal Code	T0H 1J0

Amenities

Amenities	Beach Access, Snow Removal
Utilities	Electricity at Lot Line

Additional Information

Date Listed	July 29th, 2024
Days on Market	305
Zoning	IR

Listing Details

Listing Office	All Peace Realty Ltd.
----------------	-----------------------

Data is supplied by Pillar 9â„¢ MLSÂ® System. Pillar 9â„¢ is the owner of the copyright in its MLSÂ® System. Data is deemed reliable but is not guaranteed accurate by Pillar 9â„¢. The trademarks MLSÂ®, Multiple Listing ServiceÂ® and the associated logos are owned by The Canadian Real Estate Association (CREA) and identify the quality of services provided by real estate professionals who are members of CREA. Used under license.