

\$199,900 - 587 12 Street Nw, Medicine Hat

MLS® #A2164208

\$199,900

0 Bedroom, 0.00 Bathroom,
Land on 0.15 Acres

Northwest Crescent Heights, Medicine Hat,
Alberta

Affordable lot situated in the subdivision of NWCH, offering a community service zoning. Allowing for the development of social, non-profit, educational, governmental, religious, and other public and private institutional services. Nestled within the community centrally with loads of drive by traffic and easy accessibility this lot makes for a valuable location for a new development for this desired community.

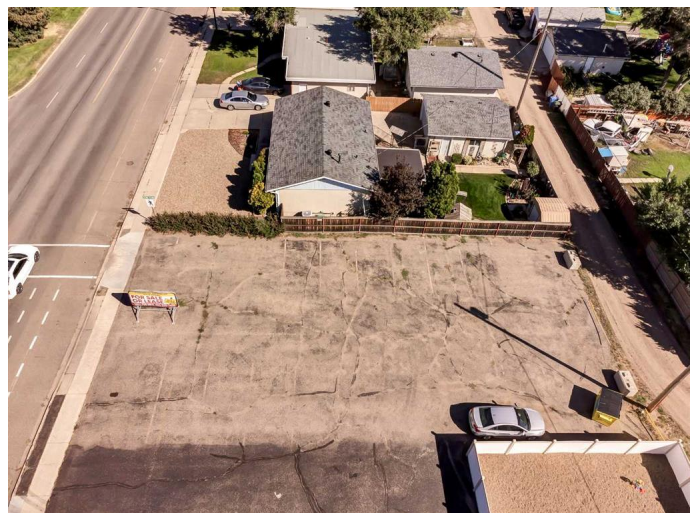
Essential Information

| | |
|-----------|-----------------|
| MLS® # | A2164208 |
| Price | \$199,900 |
| Bathrooms | 0.00 |
| Acres | 0.15 |
| Type | Land |
| Sub-Type | Commercial Land |
| Status | Active |

Community Information

| | |
|-------------|----------------------------|
| Address | 587 12 Street Nw |
| Subdivision | Northwest Crescent Heights |
| City | Medicine Hat |
| County | Medicine Hat |
| Province | Alberta |
| Postal Code | T1A6R3 |

Additional Information



| | |
|----------------|----------------------|
| Date Listed | September 11th, 2024 |
| Days on Market | 290 |
| Zoning | CS |

Listing Details

| | |
|----------------|-------------------------------|
| Listing Office | ROYAL LEPAGE COMMUNITY REALTY |
|----------------|-------------------------------|

Data is supplied by Pillar 9â„¢ MLS® System. Pillar 9â„¢ is the owner of the copyright in its MLS® System. Data is deemed reliable but is not guaranteed accurate by Pillar 9â„¢. The trademarks MLS®, Multiple Listing Service® and the associated logos are owned by The Canadian Real Estate Association (CREA) and identify the quality of services provided by real estate professionals who are members of CREA. Used under license.