

# \$499,900 - 1003 Spruce Woods Estates Drive, Coaldale

MLS® #A2186842

**\$499,900**

0 Bedroom, 0.00 Bathroom,  
Land on 3.24 Acres

NONE, Coaldale, Alberta

Here's your chance to own 3.24 acres in Coaldale! This vacant lot is 472 feet by 299 feet and fully serviced to the property line "except sewer. Located within town of Coaldale limits, this home is perfect for those looking to build their dream home near town.

## Essential Information

MLS® #	A2186842
Price	\$499,900
Bathrooms	0.00
Acres	3.24
Type	Land
Sub-Type	Residential Land
Status	Active

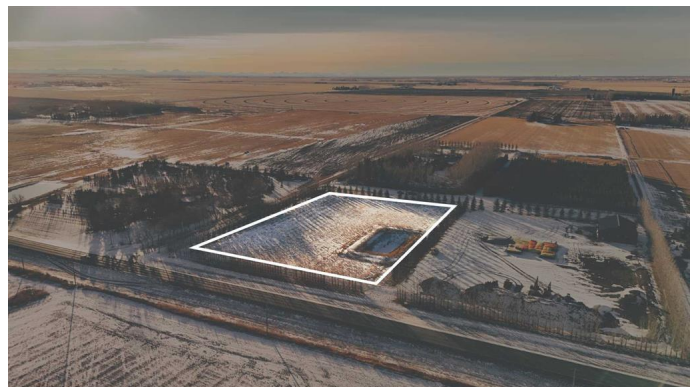
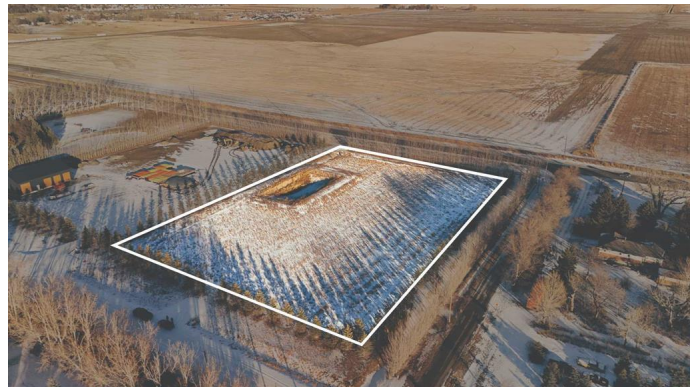
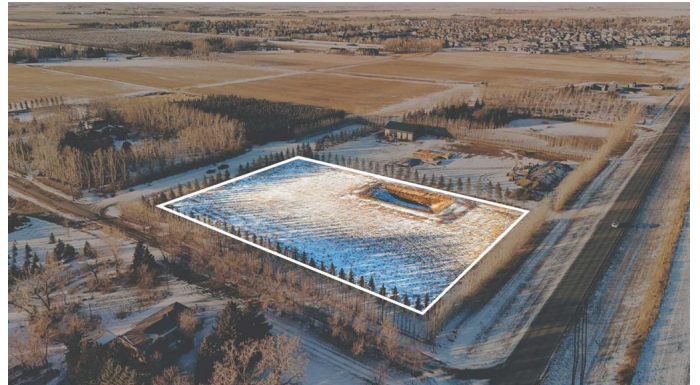
## Community Information

Address	1003 Spruce Woods Estates Drive
Subdivision	NONE
City	Coaldale
County	Lethbridge County
Province	Alberta
Postal Code	T1M 1N2

## Additional Information

Date Listed	January 10th, 2025
Days on Market	118
Zoning	RESI

## Listing Details



Listing Office

Onyx Realty Ltd.

Data is supplied by Pillar 9â„¢ MLSÂ® System. Pillar 9â„¢ is the owner of the copyright in its MLSÂ® System. Data is deemed reliable but is not guaranteed accurate by Pillar 9â„¢. The trademarks MLSÂ®, Multiple Listing ServiceÂ® and the associated logos are owned by The Canadian Real Estate Association (CREA) and identify the quality of services provided by real estate professionals who are members of CREA. Used under license.