

\$98,500 - 6926 Meadowview Drive, Stettler

MLS® #A2189131

\$98,500

0 Bedroom, 0.00 Bathroom,
Land on 0.17 Acres

Meadowlands, Stettler, Alberta

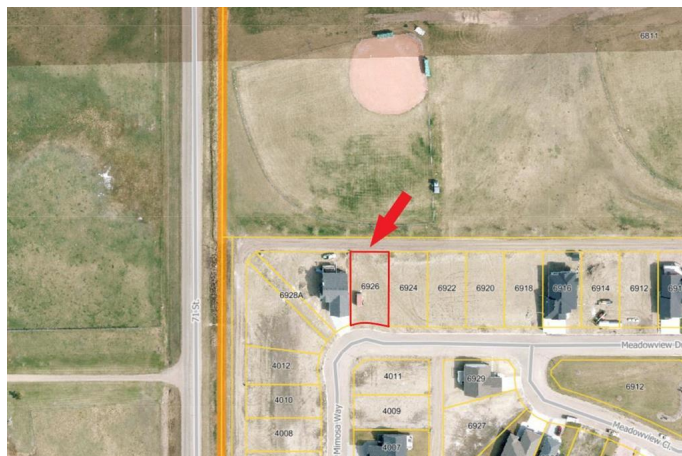
This is an awesome 19m x 37m lot which backs onto West Stettler Sports Park. This is the newest subdivision in the Town of Stettler and is growing into a beautiful community. The new builds in this area are some of the most attractive homes in town and make for a clean and aesthetically pleasing street. With direct access to the sports park and walking trails, you can put the car keys away and stroll to West Stettler Park, the Stettler Leisure Center, local shopping, and restaurants. This subdivision is as far south and west as the town currently has developed so the countryside is your neighbor! There are only a few lots remaining and this one is ready for a new home.

Essential Information

MLS® #	A2189131
Price	\$98,500
Bathrooms	0.00
Acres	0.17
Type	Land
Sub-Type	Residential Land
Status	Active

Community Information

Address	6926 Meadowview Drive
Subdivision	Meadowlands
City	Stettler



County	Stettler No. 6, County of
Province	Alberta
Postal Code	T0C 2L1

Amenities

Utilities	Electricity at Lot Line, Fiber Optics at Lot Line, Natural Gas at Lot Line, Sewer Available, Water At Lot Line
-----------	--

School Information

District	Clearview School Division No. 71
----------	----------------------------------

Additional Information

Date Listed	January 20th, 2025
Days on Market	119
Zoning	R1

Listing Details

Listing Office	RE/MAX 1st Choice Realty
----------------	--------------------------

Data is supplied by Pillar 9â„¢ MLS® System. Pillar 9â„¢ is the owner of the copyright in its MLS® System. Data is deemed reliable but is not guaranteed accurate by Pillar 9â„¢. The trademarks MLS®, Multiple Listing Service® and the associated logos are owned by The Canadian Real Estate Association (CREA) and identify the quality of services provided by real estate professionals who are members of CREA. Used under license.