

\$467,850 - 113, 285 Chelsea Court, Chestermere

MLS® #A2191796

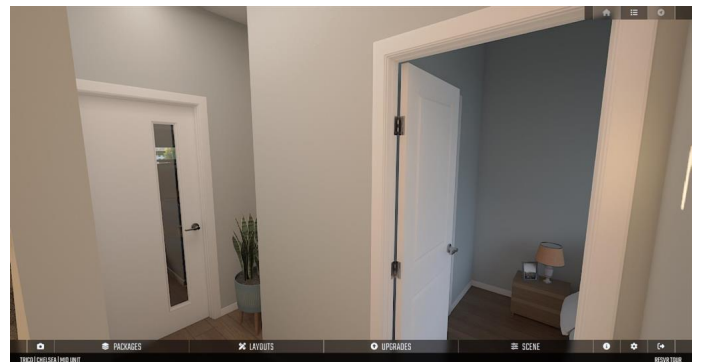
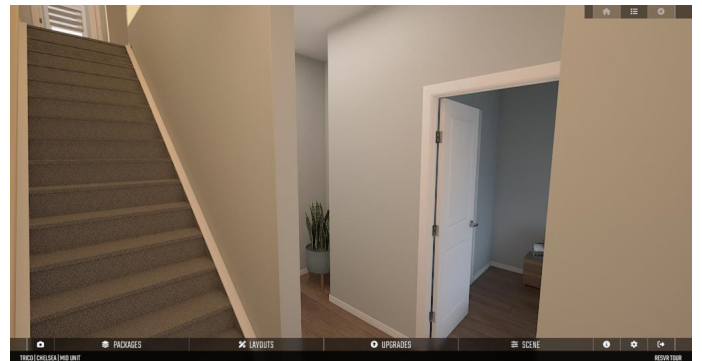
\$467,850

2 Bedroom, 4.00 Bathroom, 1,344 sqft
Residential on 0.04 Acres

Chelsea_CH, Chestermere, Alberta

Step into the beautifully designed Regent floorplan, a stunning 2-bedroom + flex room, 3.5-bath townhome that blends modern luxury with everyday convenience. Located in the desirable Chelsea community, this Trico Homes masterpiece offers an ideal combination of style, functionality, and comfort – perfect for those seeking a sophisticated and low-maintenance lifestyle. This particular unit comes in the Moonlight colour palette and has been tastefully upgraded featuring: LVP flooring throughout, a flex room with an attached 3-piece bathroom, A/C rough-ins, a semi-built-in kitchen, flush-mounted LED lights in the great room and a gas line to the deck!

The open-concept design of the Regent effortlessly integrates spacious living areas, creating a welcoming atmosphere for both relaxation and entertaining. Upon entry, you are greeted by a single-car garage, a generously sized flex room with an attached 3-piece bathroom and a foyer that leads you to the second floor, where you’ll find a sleek 2-piece powder room for added convenience. The upgraded semi-built-in kitchen is a true showstopper, featuring contemporary finishes, ample counter space, and modern appliances, making it perfect for meal prep and gatherings. The adjacent dining area and expansive great room flow seamlessly into one another, creating the perfect space for family dinners or hosting friends. Step out onto the private deck, ideal for enjoying your morning coffee in



peace.

The upper floor of the home boasts upgraded LVP flooring throughout, giving the space a polished, modern feel. Two spacious master bedrooms await, each with its own luxurious ensuite bathroom and walk-in closet. Whether you're relaxing after a long day or hosting guests, these private retreats offer the perfect balance of style and comfort.

Located in the sought-after Chelsea community, you'll enjoy easy access to Chestermere Lake, Lakeside Greens Golf Course, Easthills shopping centre, schools, and all the best amenities the area has to offer. Don't miss the opportunity to make this stylish and functional townhome your own.

Built in 2025

Essential Information

MLS® #	A2191796
Price	\$467,850
Bedrooms	2
Bathrooms	4.00
Full Baths	3
Half Baths	1
Square Footage	1,344
Acres	0.04
Year Built	2025
Type	Residential
Sub-Type	Row/Townhouse
Style	3 Storey
Status	Active

Community Information

Address	113, 285 Chelsea Court
Subdivision	Chelsea_CH
City	Chestermere

County	Chestermere
Province	Alberta
Postal Code	T1X 2W7

Amenities

Amenities	None, Snow Removal, Trash, Visitor Parking
Parking Spaces	1
Parking	Single Garage Attached
# of Garages	1

Interior

Interior Features	Built-in Features, Double Vanity, Quartz Counters, Tankless Hot Water
Appliances	Dishwasher, Electric Oven, Electric Range, Garage Control(s), Microwave, Range Hood, Refrigerator, Tankless Water Heater, Washer/Dryer
Heating	Forced Air
Cooling	Rough-In
Basement	None

Exterior

Exterior Features	BBQ gas line
Lot Description	Other
Roof	Fiberglass
Construction	Other
Foundation	Poured Concrete

Additional Information

Date Listed	February 1st, 2025
Days on Market	38
Zoning	R-4

Listing Details

Listing Office	Century 21 Bravo Realty
----------------	-------------------------

Data is supplied by Pillar 9â„¢ MLSÂ® System. Pillar 9â„¢ is the owner of the copyright in its MLSÂ® System. Data is deemed reliable but is not guaranteed accurate by Pillar 9â„¢. The trademarks MLSÂ®, Multiple Listing ServiceÂ® and the associated logos are owned by The Canadian Real Estate Association (CREA) and identify the quality of services provided by real estate professionals who are members of CREA. Used under license.