

# \$64,000 - Lot 9 Block 1, 590079 Range Road 113, Rural Woodlands County

MLS® #A2191939

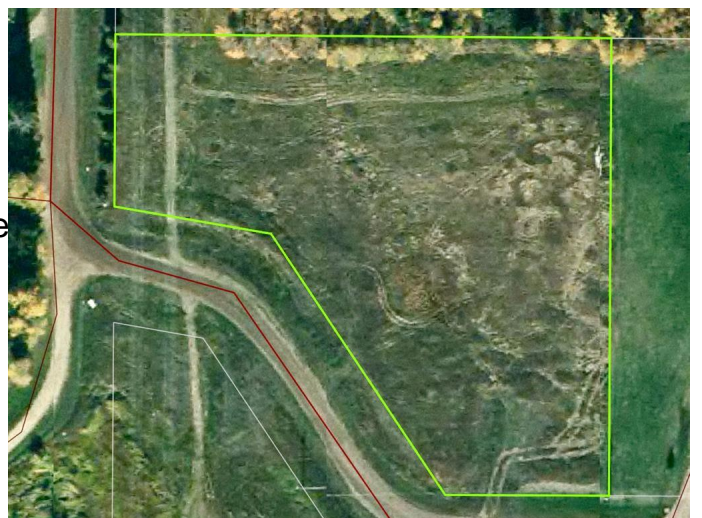
**\$64,000**

0 Bedroom, 0.00 Bathroom,  
Land on 2.77 Acres

NONE, Rural Woodlands County, Alberta

Raw land with a driveway access. A beautiful, open piece of land that is ready for your plans.

A few minutes east of Whitecourt. There is no deadline to develop. The subdivision has some high-end executive homes in the immediate area. A blowout price for you to take advantage of.



## Essential Information

MLS® #	A2191939
Price	\$64,000
Bathrooms	0.00
Acres	2.77
Type	Land
Sub-Type	Residential Land
Status	Active

## Community Information

Address	Lot 9 Block 1, 590079 Range
Subdivision	NONE
City	Rural Woodlands County
County	Woodlands County
Province	Alberta
Postal Code	T7S 1N3

## Additional Information

Date Listed	February 3rd, 2025
Days on Market	71

Zoning

CRR

## **Listing Details**

Listing Office

ROYAL LEPAGE MODERN REALTY

Data is supplied by Pillar 9â„¸ MLSÂ® System. Pillar 9â„¸ is the owner of the copyright in its MLSÂ® System. Data is deemed reliable but is not guaranteed accurate by Pillar 9â„¸. The trademarks MLSÂ®, Multiple Listing ServiceÂ® and the associated logos are owned by The Canadian Real Estate Association (CREA) and identify the quality of services provided by real estate professionals who are members of CREA. Used under license.