

\$548,000 - 170 Silverado Plains Park Sw, Calgary

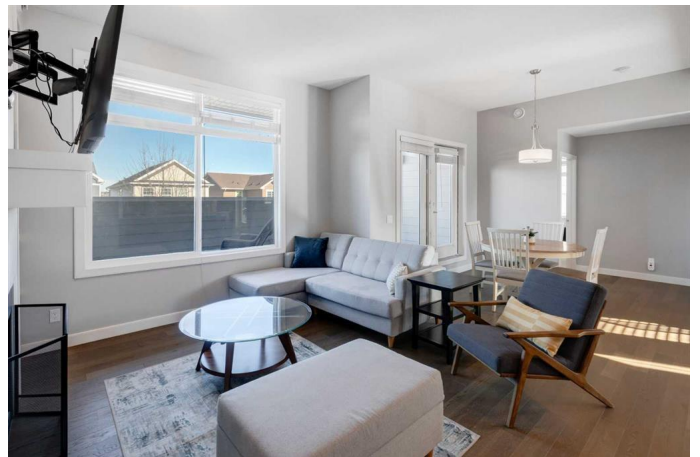
MLS® #A2194364

\$548,000

3 Bedroom, 2.00 Bathroom, 1,641 sqft
Residential on 0.00 Acres

Silverado, Calgary, Alberta

Open House Sunday 2-4pm. HOME SWEET HOME! Welcome to this sensational bungalow style, stacked Townhouse offering modern, maintenance free living in the popular SW community of Silverado! This contemporary Townhouse offers 3 bedrooms, 2 bathrooms, 1,640 exquisitely maintained SQFT throughout, central air conditioning, a double attached garage and a PET FRIENDLY complex (with board approval). Heading inside you will instantly notice the stunning pride of ownership throughout the open concept floor plan with 9 ft ceilings, upgraded engineered laminate flooring and sophisticated finishing's. The bright foyer leads you up the stairs where you will find the sun-drenched living room with oversized windows and a beautiful focal point fireplace with built-in shelving, a formal dining area and the gourmet chef's kitchen with quartz countertops, crafted wood cabinetry with under cabinet lighting, spacious quartz island with a convenient breakfast bar, upgraded stainless steel appliances with a gas range and a walk-in pantry. Completing the floor is a laundry room, storage space, two generous sized bedrooms, a wonderful 4 piece bathroom and the magnificent primary retreat with a large walk-in closet and spa-like 4 piece ensuite bathroom with an oversized shower with a built-in bench, double vanity sinks and heated flooring. Just off the kitchen you will find the oversized deck/terrace space with tons of room for BBQ'ing, entertaining guests and enjoying the tranquil views. Outside, there



is a double attached garage with 2 additional driveway parking spots and ample street parking. Close to all major amenities including being steps from an 80 acre nature reserve, shopping, public transportation, schools, parks and major roadways. MUST VIEW! Book your private viewing of this gem today!

Built in 2015

Essential Information

MLS® #	A2194364
Price	\$548,000
Bedrooms	3
Bathrooms	2.00
Full Baths	2
Square Footage	1,641
Acres	0.00
Year Built	2015
Type	Residential
Sub-Type	Row/Townhouse
Style	Bungalow
Status	Active

Community Information

Address	170 Silverado Plains Park Sw
Subdivision	Silverado
City	Calgary
County	Calgary
Province	Alberta
Postal Code	T2X 1Y8

Amenities

Amenities	Snow Removal, Trash
Parking Spaces	5
Parking	Additional Parking, Double Garage Attached, Driveway, Front Drive, Garage Door Opener, Garage Faces Rear, Insulated, Multiple Driveways, Off Street, On Street, Parking Pad, Rear Drive, See Remarks, Stall, Workshop in Garage, Alley Access

of Garages 2

Interior

Interior Features Bookcases, Breakfast Bar, Built-in Features, Closet Organizers, High Ceilings, No Smoking Home, Open Floorplan, Pantry, Quartz Counters, See Remarks, Storage, Vinyl Windows, Walk-In Closet(s)

Appliances Central Air Conditioner, Dishwasher, Dryer, Gas Stove, Microwave, Range Hood, Refrigerator, Washer, Window Coverings

Heating In Floor, Forced Air, Natural Gas

Cooling Central Air

Fireplace Yes

of Fireplaces 1

Fireplaces Gas, Living Room, Mantle, Tile, Gas Log, See Remarks

Basement None

Exterior

Exterior Features Balcony, BBQ gas line, Other

Lot Description City Lot, Few Trees, Front Yard, Landscaped, Level, Low Maintenance Landscape, Views

Roof Asphalt Shingle

Construction Cement Fiber Board, Wood Frame, Wood Siding

Foundation Poured Concrete

Additional Information

Date Listed February 26th, 2025

Days on Market 71

Zoning DC

HOA Fees 210

HOA Fees Freq. ANN

Listing Details

Listing Office Century 21 Bamber Realty LTD.

Data is supplied by Pillar 9â„¢ MLS® System. Pillar 9â„¢ is the owner of the copyright in its MLS® System. Data is deemed reliable but is not guaranteed accurate by Pillar 9â„¢. The trademarks MLS®, Multiple Listing Service® and the associated logos are owned by The Canadian Real Estate Association (CREA) and identify the quality of services provided by real estate professionals who are members of CREA. Used under license.