

\$589,900 - 4545 25 Avenue S, Lethbridge

MLS® #A2197357

\$589,900

4 Bedroom, 4.00 Bathroom, 1,710 sqft

Residential on 0.09 Acres

Discovery, Lethbridge, Alberta

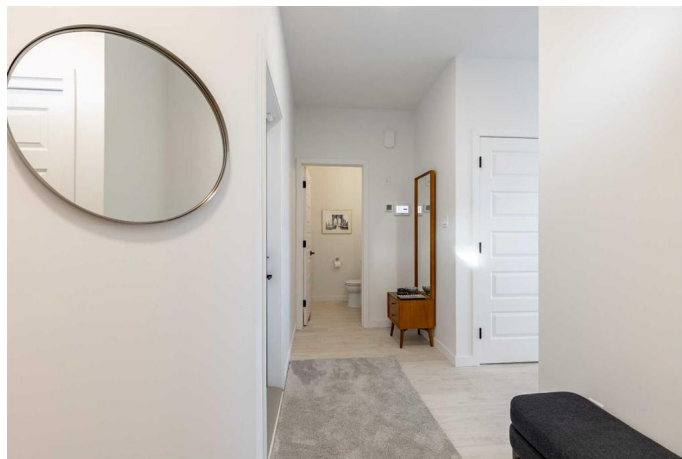
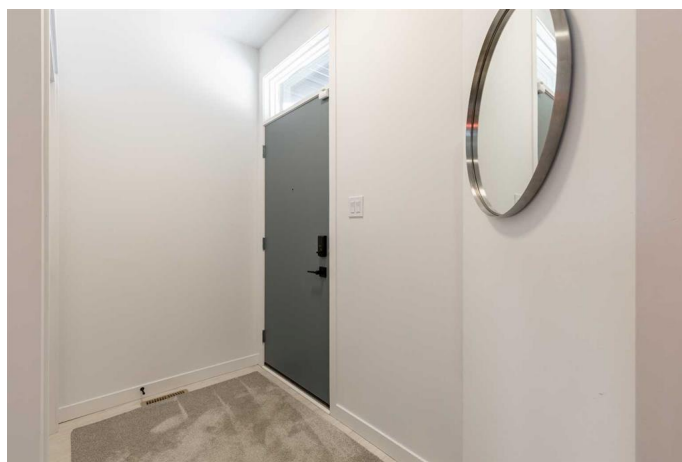
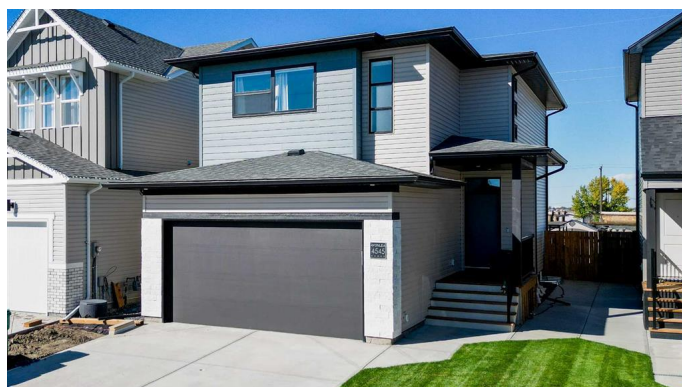
This Avonlea built home is a STUNNER and sure to wow! Located in the incredibly desirable Discovery neighbourhood, this 2022 built home is fully finished from exterior to interior and is ready for you and your family to move on in! Unlike most new builds this home comes with: window coverings, a washer and dryer, beautiful back and front yard landscaping including fencing, a garden shed, a massive back deck (with low maintenance composite decking), central air conditioning, a FULLY FINISHED basement, and a wet bar!! The Isla layout by Avonlea provides your family with a large bonus room upstairs, a spacious primary bedroom with a huge walk-in closet and double vanity sink in the ensuite, quartz countertops in the kitchen, a corner pantry, a double attached garage, sliding patio doors and massive windows throughout providing tons of natural light, and beautiful light fixtures and laminate flooring. Whether you are a growing family, or a professional couple or single just looking for a fantastic home, this is the one for you! With all the extras this property offers it is simply a no-brainer! Call your REALTOR® and book your showing today!!

Built in 2022

Essential Information

MLS® # A2197357

Price \$589,900



| | |
|----------------|-------------|
| Bedrooms | 4 |
| Bathrooms | 4.00 |
| Full Baths | 3 |
| Half Baths | 1 |
| Square Footage | 1,710 |
| Acres | 0.09 |
| Year Built | 2022 |
| Type | Residential |
| Sub-Type | Detached |
| Style | 2 Storey |
| Status | Active |

Community Information

| | |
|-------------|------------------|
| Address | 4545 25 Avenue S |
| Subdivision | Discovery |
| City | Lethbridge |
| County | Lethbridge |
| Province | Alberta |
| Postal Code | T1K 8K6 |

Amenities

| | |
|----------------|------------------------|
| Parking Spaces | 4 |
| Parking | Double Garage Attached |
| # of Garages | 2 |

Interior

| | |
|-------------------|-----------------------------------------------------------------------------------------------------------------|
| Interior Features | Built-in Features, Storage |
| Appliances | Central Air Conditioner, Dishwasher, Dryer, Garage Control(s), Refrigerator, Stove(s), Washer, Window Coverings |
| Heating | Forced Air |
| Cooling | Central Air |
| Has Basement | Yes |
| Basement | Finished, Full |

Exterior

| | |
|-------------------|---------------------------------|
| Exterior Features | Storage |
| Lot Description | Landscaped, Standard Shaped Lot |
| Roof | Asphalt Shingle |
| Construction | Vinyl Siding |

Foundation Poured Concrete

Additional Information

Date Listed March 3rd, 2025
Days on Market 89
Zoning R-L

Listing Details

Listing Office Grassroots Realty Group

Data is supplied by Pillar 9â„¸ MLSÂ® System. Pillar 9â„¸ is the owner of the copyright in its MLSÂ® System. Data is deemed reliable but is not guaranteed accurate by Pillar 9â„¸. The trademarks MLSÂ®, Multiple Listing ServiceÂ® and the associated logos are owned by The Canadian Real Estate Association (CREA) and identify the quality of services provided by real estate professionals who are members of CREA. Used under license.