

\$498,900 - 38 Somerset Cove Se, Medicine Hat

MLS® #A2197493

\$498,900

5 Bedroom, 3.00 Bathroom, 1,162 sqft
Residential on 0.12 Acres

Southland, Medicine Hat, Alberta

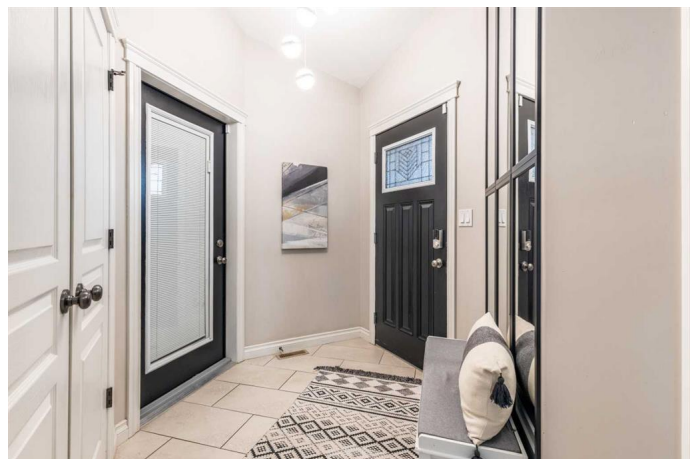
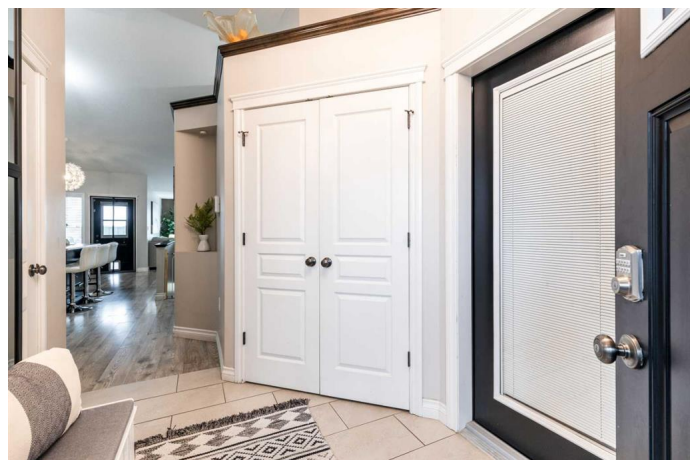
Say hello to this inviting bungalow! The first thing youâ€™ll notice is the sweet front porch, perfectly positioned to overlook the quiet court.

There are numerous stylish updates that create welcoming move in ready feel. Vaulted ceilings enhance the light and airy ambiance throughout. The main floor enjoys 3 bedrooms including the primary bedroom featuring ensuite and his& hers closets. The newly developed basement is a standout featureâ€”offering a dedicated gym, versatile flex spaces, two spacious bedrooms, a full bathroom, and a cozy family area with a dry bar, perfect for movie nights. The fully developed yard features a fun covered pergola that provides endless options for fun and enjoyment! Buyers will love the addition of GEM Stone Lighting so you can celebrate all the holidays or your favourite team in style!! Don't miss out!!

Built in 2012

Essential Information

MLS® #	A2197493
Price	\$498,900
Bedrooms	5
Bathrooms	3.00
Full Baths	3
Square Footage	1,162
Acres	0.12
Year Built	2012



Type	Residential
Sub-Type	Detached
Style	Bungalow
Status	Active

Community Information

Address	38 Somerset Cove Se
Subdivision	Southland
City	Medicine Hat
County	Medicine Hat
Province	Alberta
Postal Code	T1B0G5

Amenities

Parking Spaces	4
Parking	Double Garage Attached, Heated Garage
# of Garages	2

Interior

Interior Features	Breakfast Bar, High Ceilings, Kitchen Island, No Smoking Home, Pantry, See Remarks, Vaulted Ceiling(s)
Appliances	Dishwasher, Garage Control(s), Microwave Hood Fan, Refrigerator, Stove(s), Window Coverings
Heating	Forced Air
Cooling	Central Air
Has Basement	Yes
Basement	Finished, Full

Exterior

Exterior Features	Other, Private Yard
Lot Description	Back Lane
Roof	Asphalt Shingle
Construction	Brick, Vinyl Siding
Foundation	Poured Concrete

Additional Information

Date Listed	March 3rd, 2025
Days on Market	8
Zoning	R-LD

Listing Details

Listing Office REAL BROKER

Data is supplied by Pillar 9â,,ç MLSÂ® System. Pillar 9â,,ç is the owner of the copyright in its MLSÂ® System. Data is deemed reliable but is not guaranteed accurate by Pillar 9â,,ç. The trademarks MLSÂ®, Multiple Listing ServiceÂ® and the associated logos are owned by The Canadian Real Estate Association (CREA) and identify the quality of services provided by real estate professionals who are members of CREA. Used under license.