

\$969,900 - 121 Panatella Green Nw, Calgary

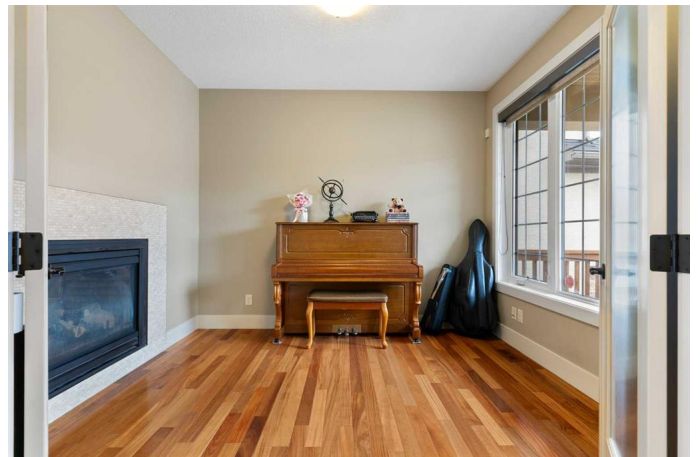
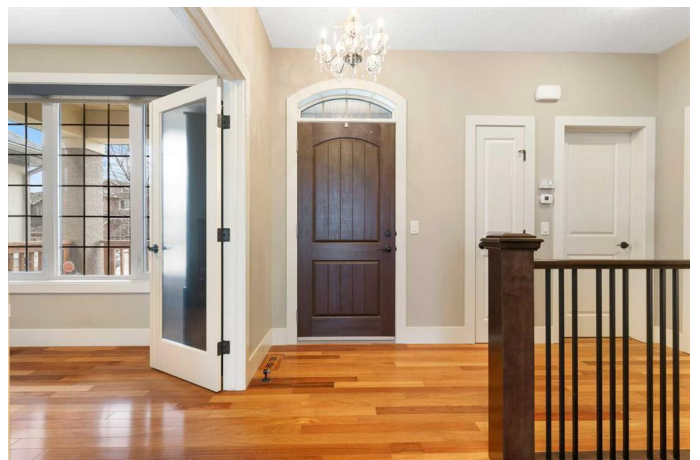
MLS® #A2204349

\$969,900

3 Bedroom, 3.00 Bathroom, 2,628 sqft
Residential on 0.11 Acres

Panorama Hills, Calgary, Alberta

This exceptional executive home is everything you've been searching for! Located in a quiet cul-de-sac and directly across from scenic walking paths and the pond in the highly sought-after Panorama Hill community, this home is designed with impeccable high-end finishes throughout. The expansive main floor boasts a chef-inspired kitchen, featuring stainless steel JENN-AIR & BOSCH appliances, granite countertops, generous cabinet and counter space, a corner walk-in pantry, and a convenient computer station. The open-concept living room is anchored by a beautiful double-sided gas fireplace and framed by large windows, offering a bright and inviting atmosphere. A den provides a flexible space, perfect for work or relaxation. Upstairs, you'll discover a spacious master suite featuring a French door, a walk-in closet and a luxurious ensuite, the perfect retreat after a long day. The second floor also includes two generously sized bedrooms, a well-appointed bathroom, a laundry room, and a dedicated study and work area, ideal for a growing family. The partially finished 9-ft basement features a cozy family room, ideal for movie nights or casual gatherings. The backyard is designed for enjoyment, featuring a fantastic sport pad, ideal for family fun and outdoor relaxation. Conveniently located near Buffalo Rubbing Stone School, Captain Nichola Goddard School, and St. Jerome Elementary School, this home is also within close proximity to Country Hills Golf Club, shopping malls, and



major banks. Don't miss the opportunity to live in this vibrant and welcoming community, your dream home is waiting!

Built in 2010

Essential Information

| | |
|----------------|-------------|
| MLS® # | A2204349 |
| Price | \$969,900 |
| Bedrooms | 3 |
| Bathrooms | 3.00 |
| Full Baths | 2 |
| Half Baths | 1 |
| Square Footage | 2,628 |
| Acres | 0.11 |
| Year Built | 2010 |
| Type | Residential |
| Sub-Type | Detached |
| Style | 2 Storey |
| Status | Active |

Community Information

| | |
|-------------|------------------------|
| Address | 121 Panatella Green Nw |
| Subdivision | Panorama Hills |
| City | Calgary |
| County | Calgary |
| Province | Alberta |
| Postal Code | T3K 0M6 |

Amenities

| | |
|----------------|----------------------------------|
| Amenities | Other |
| Parking Spaces | 4 |
| Parking | Double Garage Attached, Driveway |
| # of Garages | 2 |

Interior

| | |
|-------------------|----------------------------------------------------------------------------------------------------------|
| Interior Features | Double Vanity, Kitchen Island, Pantry, Stone Counters, Walk-In Closet(s) |
| Appliances | Built-In Oven, Dishwasher, Garburator, Gas Stove, Range Hood, Refrigerator, Washer/Dryer, Water Softener |

| | |
|-----------------|--------------------------|
| Heating | Forced Air, Natural Gas |
| Cooling | None |
| Fireplace | Yes |
| # of Fireplaces | 2 |
| Fireplaces | Double Sided, Gas |
| Has Basement | Yes |
| Basement | Full, Partially Finished |

Exterior

| | |
|-------------------|----------------------------------------|
| Exterior Features | Playground, Private Yard |
| Lot Description | Back Yard, Cul-De-Sac, Rectangular Lot |
| Roof | Asphalt Shingle |
| Construction | Stone, Stucco |
| Foundation | Poured Concrete |

Additional Information

| | |
|----------------|-----------------|
| Date Listed | April 1st, 2025 |
| Days on Market | 15 |
| Zoning | R-G |
| HOA Fees | 263 |
| HOA Fees Freq. | ANN |

Listing Details

Listing Office Century 21 Bamber Realty LTD.

Data is supplied by Pillar 9â„¢ MLSÂ® System. Pillar 9â„¢ is the owner of the copyright in its MLSÂ® System. Data is deemed reliable but is not guaranteed accurate by Pillar 9â„¢. The trademarks MLSÂ®, Multiple Listing ServiceÂ® and the associated logos are owned by The Canadian Real Estate Association (CREA) and identify the quality of services provided by real estate professionals who are members of CREA. Used under license.