

\$699,900 - 155 Galbraith Drive Sw, Calgary

MLS® #A2207496

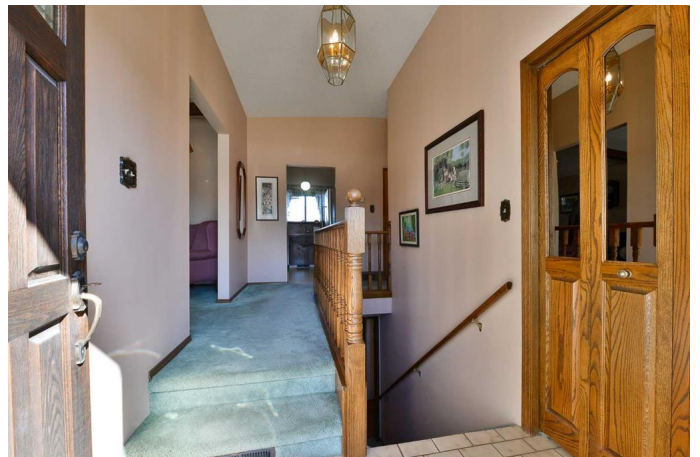
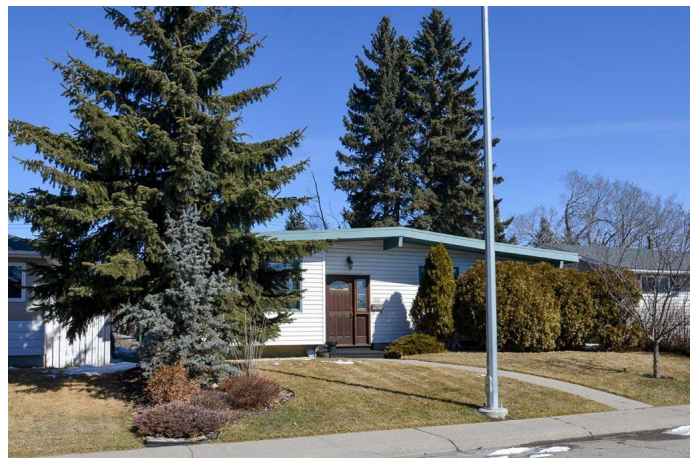
\$699,900

4 Bedroom, 2.00 Bathroom, 1,336 sqft
Residential on 0.12 Acres

Glamorgan, Calgary, Alberta

**** OPEN HOUSE Saturday April 12th

1:30-4:00pm **** This charming and comfortable home at 155 Galbraith Drive SW has been loved and maintained by the same family for almost 60 years. The quality of this property is evident the moment you open the front door. A great bungalow that has 1,336 square feet on the main level with vaulted ceilings that makes the home feel even more spacious. The layout includes three bedrooms, an "L" shaped living room/dining room that is open to the kitchen and an inviting family room with majestic wood burning fireplace and patio doors to the private back yard with lots of trees, shrubs, a pond, waterfall and patio. The basement is fully finished with a huge family room, an additional bedroom and a spa like retro 4 pce bathroom that includes a luxurious jetted tub and a shower. This is an opportunity in very desirable Glamorgan, walking distance to all of this fantastic community's amenities including all levels of schooling, shopping, coffee shops, restaurants, public transportation, the Grey Eagle Event Center, Mount Royal University and easy access to the Ring Road to get anywhere in the city or out of town to the mountains quickly. ATTENTION BUILDERS, DEVELOPERS and INVESTORS M-C1 zoning 50' x 100' lot. M-C1 zoning in Calgary is intended to accommodate existing residential development and contextually sensitive redevelopment in the form of Duplex Dwellings, Semi-detached Dwellings, and Single Detached Dwellings in the Developed



Area. This is a great property that a new family will be able to enjoy for the next 60 years. Call today for your private viewing!

Built in 1965

Essential Information

| | |
|----------------|-------------|
| MLS® # | A2207496 |
| Price | \$699,900 |
| Bedrooms | 4 |
| Bathrooms | 2.00 |
| Full Baths | 2 |
| Square Footage | 1,336 |
| Acres | 0.12 |
| Year Built | 1965 |
| Type | Residential |
| Sub-Type | Detached |
| Style | Bungalow |
| Status | Active |

Community Information

| | |
|-------------|------------------------|
| Address | 155 Galbraith Drive Sw |
| Subdivision | Glamorgan |
| City | Calgary |
| County | Calgary |
| Province | Alberta |
| Postal Code | T3E 4Z5 |

Amenities

| | |
|----------------|-------------------------|
| Parking Spaces | 1 |
| Parking | Off Street, Parking Pad |

Interior

| | |
|-------------------|--|
| Interior Features | Beamed Ceilings, High Ceilings, Tankless Hot Water, Vaulted Ceiling(s) |
| Appliances | Dishwasher, Dryer, Refrigerator, Stove(s), Washer |
| Heating | Forced Air, Natural Gas |
| Cooling | None |
| Fireplace | Yes |
| # of Fireplaces | 1 |

| | |
|--------------|--|
| Fireplaces | Wood Burning, Family Room, Gas Starter |
| Has Basement | Yes |
| Basement | Finished, Full |

Exterior

| | |
|-------------------|--|
| Exterior Features | Garden, Private Yard |
| Lot Description | Back Lane, Back Yard, City Lot, Front Yard, Interior Lot, Landscaped, Street Lighting, Few Trees |
| Roof | Tar/Gravel |
| Construction | Vinyl Siding |
| Foundation | Poured Concrete |

Additional Information

| | |
|----------------|-----------------|
| Date Listed | April 5th, 2025 |
| Days on Market | 6 |
| Zoning | M-C1 |

Listing Details

| | |
|----------------|------------------------|
| Listing Office | RE/MAX Complete Realty |
|----------------|------------------------|

Data is supplied by Pillar 9â„¢ MLSÂ® System. Pillar 9â„¢ is the owner of the copyright in its MLSÂ® System. Data is deemed reliable but is not guaranteed accurate by Pillar 9â„¢. The trademarks MLSÂ®, Multiple Listing ServiceÂ® and the associated logos are owned by The Canadian Real Estate Association (CREA) and identify the quality of services provided by real estate professionals who are members of CREA. Used under license.