

# \$1,636,250 - Range Road 280, Rural Rocky View County

MLS® #A2212158

**\$1,636,250**

0 Bedroom, 0.00 Bathroom,  
Land on 187.00 Acres

NONE, Rural Rocky View County, Alberta

Great opportunity to own a QUARTER with and additional 27 acres +/- for a total of 187 acres +/- . Located SW of Kathryn on the corner of RR 280 and TWP RD 260, this is a great location being only a mile and a half off pavement. The property is cultivated with a small draw (see google earth shot). Opportunities to obtain large scale land have become a rarity in recent years, don't miss out on this one!

## Essential Information

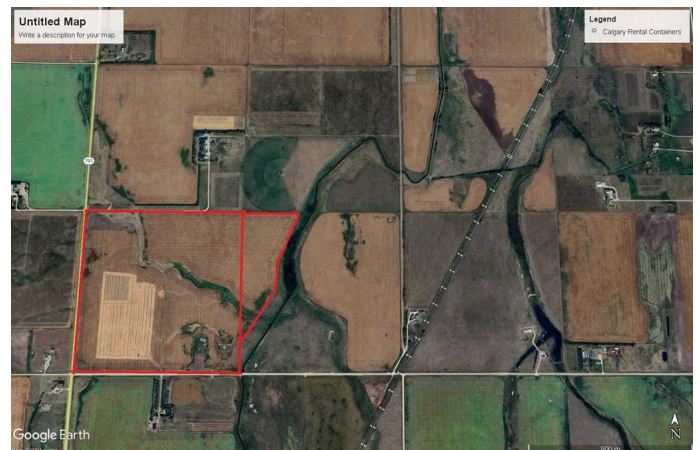
MLS® #	A2212158
Price	\$1,636,250
Bathrooms	0.00
Acres	187.00
Type	Land
Sub-Type	Residential Land
Status	Active

## Community Information

Address	Range Road 280
Subdivision	NONE
City	Rural Rocky View County
County	Rocky View County
Province	Alberta
Postal Code	T4A 1J3

## Additional Information

Date Listed	April 16th, 2025
-------------	------------------



Days on Market	70
Zoning	Agriculture General

## Listing Details

Listing Office	RE/MAX Rocky View Real Estate
----------------	-------------------------------

Data is supplied by Pillar 9â„¢ MLS® System. Pillar 9â„¢ is the owner of the copyright in its MLS® System. Data is deemed reliable but is not guaranteed accurate by Pillar 9â„¢. The trademarks MLS®, Multiple Listing Service® and the associated logos are owned by The Canadian Real Estate Association (CREA) and identify the quality of services provided by real estate professionals who are members of CREA. Used under license.