

\$265,000 - 410, 35 Richard Court Sw, Calgary

MLS® #A2213322

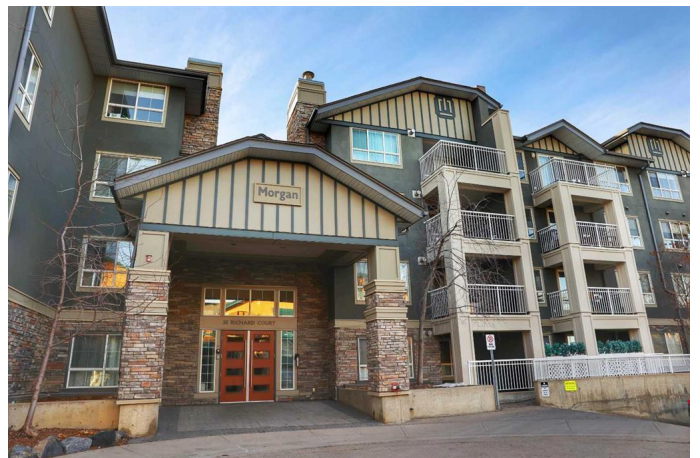
\$265,000

1 Bedroom, 1.00 Bathroom, 549 sqft

Residential on 0.00 Acres

Lincoln Park, Calgary, Alberta

Welcome to this lovely TOP FLOOR unit at the Morgan in safe and serene Lincoln Park! The Morgan is a PET FRIENDLY, sought-after building and only steps to MRU and shopping, with quick access to Crowchild Trail for easy trips around town. Enjoy GORGEOUS VIEWS of downtown, that are even more stunning at night on the private patio. This is a great home for students, investors, and everyone in between. Walking into the spacious foyer, youâ€™ll see the large picture window flooding the home with natural light. The modern kitchen, featuring full height cabinets with new dishwasher and ample counterspace, opens onto the dining and living room, making it a breeze to cook while entertaining friends. The fantastic layout allows for both bar seating and dining table, as well as a large living room set across from the gas fireplace for cozy game or movie nights. Walking onto the balcony, you canâ€™t help but imagine evening BBQs, enjoying the view of the downtown skyline. Stepping into the bedroom, youâ€™re greeted by another bright window with complete privacy from the surrounding condos. The walkthrough closet, where youâ€™ll find your brand new stacked IN SUITE LAUNDRY, leads to the bright and clean âœœcheaterâœ• ensuite bathroom, which conveniently opens back to the foyer. The central location and easy access is great for getting around to experience what Calgary has to offer. The building boasts a well outfitted gym, movie and games room with ping pong



and foosball, GUEST SUITE for when family comes to town, and to top it off the titled parking stall is close to the elevator and the well-sized storage unit. Unit is AVAILABLE FURNISHED. Book your showing today!

Built in 2003

Essential Information

| | |
|----------------|-------------------|
| MLS® # | A2213322 |
| Price | \$265,000 |
| Bedrooms | 1 |
| Bathrooms | 1.00 |
| Full Baths | 1 |
| Square Footage | 549 |
| Acres | 0.00 |
| Year Built | 2003 |
| Type | Residential |
| Sub-Type | Apartment |
| Style | Single Level Unit |
| Status | Active |

Community Information

| | |
|-------------|--------------------------|
| Address | 410, 35 Richard Court Sw |
| Subdivision | Lincoln Park |
| City | Calgary |
| County | Calgary |
| Province | Alberta |
| Postal Code | T3E 7N9 |

Amenities

| | |
|----------------|---|
| Amenities | Park, Secured Parking, Storage, Elevator(s), Fitness Center, Gazebo, Guest Suite, Party Room, Recreation Room |
| Parking Spaces | 1 |
| Parking | Heated Garage, Parkade, Underground, Covered, Titled |
| # of Garages | 1 |

Interior

| | |
|-------------------|-------------------------------|
| Interior Features | Breakfast Bar, Ceiling Fan(s) |
|-------------------|-------------------------------|

| | |
|-----------------|--|
| Appliances | Dishwasher, Garage Control(s), Microwave, Range Hood, Refrigerator, Stove(s), Washer/Dryer Stacked, Window Coverings |
| Heating | Baseboard, Boiler |
| Cooling | None |
| Fireplace | Yes |
| # of Fireplaces | 1 |
| Fireplaces | Gas |
| # of Stories | 4 |

Exterior

| | |
|-------------------|---------------------------------------|
| Exterior Features | Balcony, Courtyard, Storage, Barbecue |
| Construction | Stone, Stucco, Wood Frame |

Additional Information

| | |
|----------------|------------------|
| Date Listed | April 19th, 2025 |
| Days on Market | 20 |
| Zoning | M-H1 |

Listing Details

| | |
|----------------|------------|
| Listing Office | CIR Realty |
|----------------|------------|

Data is supplied by Pillar 9â„¢ MLS® System. Pillar 9â„¢ is the owner of the copyright in its MLS® System. Data is deemed reliable but is not guaranteed accurate by Pillar 9â„¢. The trademarks MLS®, Multiple Listing Service® and the associated logos are owned by The Canadian Real Estate Association (CREA) and identify the quality of services provided by real estate professionals who are members of CREA. Used under license.