

\$274,900 - 616, 111 14 Avenue Se, Calgary

MLS® #A2214223

\$274,900

2 Bedroom, 1.00 Bathroom, 894 sqft

Residential on 0.00 Acres

Beltline, Calgary, Alberta

****Open House - Sun Apr 27 1pm-4pm****

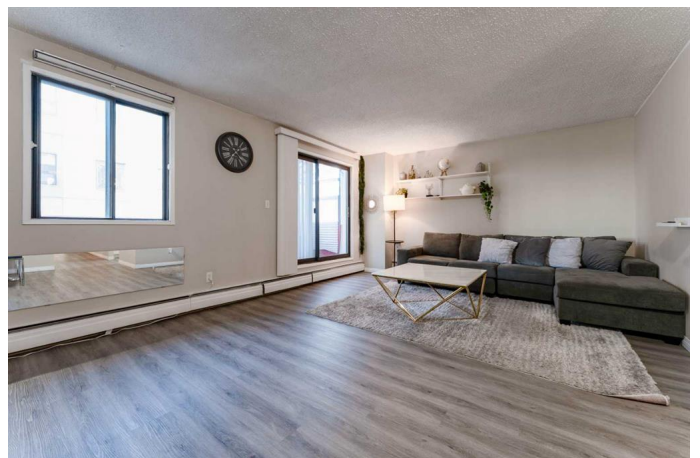
Welcome to Unit 616 – 111 14 Ave SE | 2 Bed | 1 Bath | 2 Balconies | Underground Parking Modern updates meet downtown convenience in this bright 2-bedroom condo in Calgary’s Beltline. The unit features a spacious open layout, brand-new kitchen cabinets and countertop, stainless steel appliances, and plenty of natural light. Enjoy two private balconies with city views, in-suite storage, and underground heated parking. Condo fee also include Electricity.

Steps from the Saddledome, Stampede Grounds, 17th Ave, and C-Train access – this is the perfect spot for first-time buyers, professionals, or savvy investors!

Built in 1981

Essential Information

MLS® #	A2214223
Price	\$274,900
Bedrooms	2
Bathrooms	1.00
Full Baths	1
Square Footage	894
Acres	0.00
Year Built	1981



Type	Residential
Sub-Type	Apartment
Style	Single Level Unit
Status	Active

Community Information

Address	616, 111 14 Avenue Se
Subdivision	Beltline
City	Calgary
County	Calgary
Province	Alberta
Postal Code	T2G 4Z8

Amenities

Amenities	Elevator(s), Party Room, Secured Parking, Trash, Visitor Parking, Coin Laundry
Parking Spaces	1
Parking	Parkade, Underground

Interior

Interior Features	See Remarks, Elevator
Appliances	Dishwasher, Electric Stove, Refrigerator, Window Coverings
Heating	Baseboard, Hot Water
Cooling	None
# of Stories	6

Exterior

Exterior Features	Balcony
Construction	Concrete

Additional Information

Date Listed	April 23rd, 2025
Days on Market	43
Zoning	CC-MH

Listing Details

Listing Office	RE/MAX Complete Realty
----------------	------------------------

Data is supplied by Pillar 9â„¢ MLS® System. Pillar 9â„¢ is the owner of the copyright in its MLS® System. Data is deemed reliable but is not guaranteed accurate by Pillar 9â„¢. The trademarks MLS®, Multiple Listing Service® and the associated logos are owned by The Canadian Real Estate Association (CREA) and identify the quality of services

provided by real estate professionals who are members of CREA. Used under license.