

# \$3,000,000 - 325 Acres Horse Creek Road, Rural Rocky View County

---

MLS® #A2215641

**\$3,000,000**

0 Bedroom, 0.00 Bathroom,  
Land on 325.90 Acres

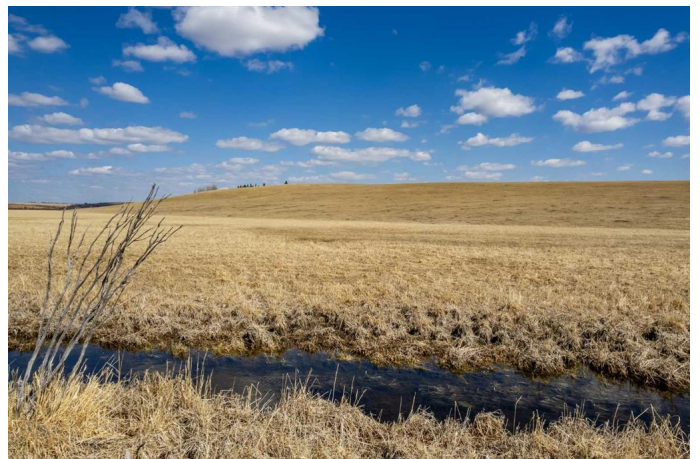
NONE, Rural Rocky View County, Alberta

ABSOLUTELY STUNNING 325 ACRES on two titles with the Horse Creek running through both parcels. This exceptional ranch land has majestic mountain views to both the South and West and would be the perfect backdrop for your dream country estate or serve as an enduring long term land holding investment. Located just 10 minutes NW of Cochrane on pavement this stunning raw law is comprised of native prairie grassland, wetlands and some trees. This is a nature lover's paradise where you will see elk, moose, deer and an abundance of birds throughout the year. Both quarter sections must be sold together and present a special opportunity for you to acquire a large land assembly with quick access to Calgary, Banff National Park and major routes. GST is applicable. A confirmed appointment is required for all viewings.

## Essential Information

MLS® #	A2215641
Price	\$3,000,000
Bathrooms	0.00
Acres	325.90
Type	Land
Sub-Type	Residential Land
Status	Active

## Community Information



Address	325 Acres Horse Creek Road
Subdivision	NONE
City	Rural Rocky View County
County	Rocky View County
Province	Alberta
Postal Code	T4C 2X2

### **Amenities**

Waterfront	Creek
------------	-------

### **Additional Information**

Date Listed	April 28th, 2025
Days on Market	31
Zoning	Ag - Gen

### **Listing Details**

Listing Office	CIR Realty
----------------	------------

Data is supplied by Pillar 9â„¢ MLS® System. Pillar 9â„¢ is the owner of the copyright in its MLS® System. Data is deemed reliable but is not guaranteed accurate by Pillar 9â„¢. The trademarks MLS®, Multiple Listing Service® and the associated logos are owned by The Canadian Real Estate Association (CREA) and identify the quality of services provided by real estate professionals who are members of CREA. Used under license.