

\$849,900 - 22 Creek Road, Rural Ponoka County

MLS® #A2220456

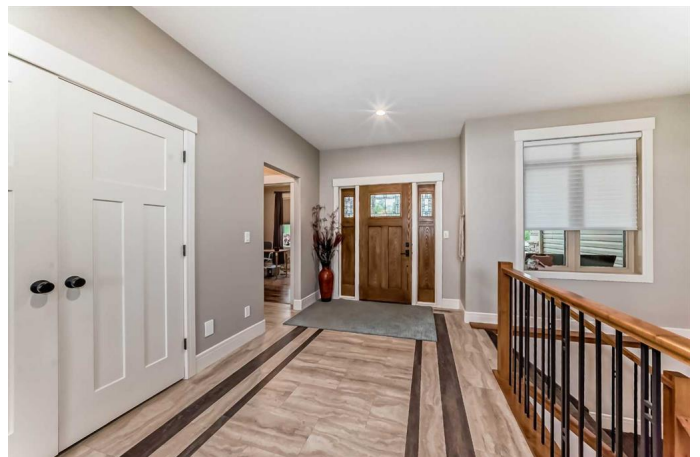
\$849,900

4 Bedroom, 3.00 Bathroom, 1,908 sqft

Residential on 1.81 Acres

Wolf Creek Estates, Rural Ponoka County, Alberta

Discover this exquisite estate home, nestled on nearly 2 acres, showcasing meticulous craftsmanship and striking curb appeal. Built by Gill Custom Homes, this walkout bungalow blends luxury and functionality with high-end finishes. Featuring 2+2 bedrooms, this "Smart Home" integrates Control 4 technology for seamless control of lighting, thermostats, garage doors, and a robust audio system with 8 outdoor and 14 indoor speakers. The airy Great Room impresses with vaulted ceilings, large windows, and a gas fireplace framed in floor-to-ceiling stone. The chef's kitchen is a masterpiece, equipped with a walk-through pantry, premium appliances—including a built-in coffee/espresso machine, oversized fridge/freezer, convection and steam ovens—and a grand granite-topped island. The primary suite offers a spa-inspired ensuite with dual vanities, a steam shower, a soaker tub, and a thoughtfully designed walk-in closet, with direct access to the back deck. The office at the front of the home could also be utilized as a bedroom. A well-placed laundry room near the mudroom and garage offers ample storage. The walkout basement is an entertainer's dream, featuring a rec room, wet bar with fridge, dishwasher, microwave, a wine room, and a theatre room pre-wired for Dolby Atmos. In-floor heating adds comfort throughout the lower level. Outside, enjoy mature trees, Cedar shakes, stone accents, paved RV parking, extensive landscaping, and



a gas line for a barbecue or fire table, with hot tub wiring (hot tub negotiable). A concrete pad serves as a basketball court or additional patio. The private backyard borders a wooded area and creek, offering tranquility. Located just minutes from Highway 2, 10 minutes from Ponoka and Lacombe, 25 minutes from Red Deer, and 45 minutes from Edmonton International Airport, this move-in-ready luxury bungalow is the perfect blend of elegance and convenience. Seize the opportunity to call this extraordinary property home!

Built in 2015

Essential Information

| | |
|----------------|----------------------------------|
| MLS® # | A2220456 |
| Price | \$849,900 |
| Bedrooms | 4 |
| Bathrooms | 3.00 |
| Full Baths | 3 |
| Square Footage | 1,908 |
| Acres | 1.81 |
| Year Built | 2015 |
| Type | Residential |
| Sub-Type | Detached |
| Style | Acreage with Residence, Bungalow |
| Status | Active |

Community Information

| | |
|-------------|---------------------|
| Address | 22 Creek Road |
| Subdivision | Wolf Creek Estates |
| City | Rural Ponoka County |
| County | Ponoka County |
| Province | Alberta |
| Postal Code | T4J 1R3 |

Amenities

| | |
|--------------|------------------------|
| Parking | Triple Garage Attached |
| # of Garages | 3 |

Interior

| | |
|-------------------|--|
| Interior Features | See Remarks |
| Appliances | Central Air Conditioner, Dishwasher, Electric Stove, Garage Control(s), Refrigerator, Washer/Dryer, Window Coverings |
| Heating | Forced Air |
| Cooling | Central Air |
| Fireplace | Yes |
| # of Fireplaces | 1 |
| Fireplaces | Gas |
| Has Basement | Yes |
| Basement | Finished, Full |

Exterior

| | |
|-------------------|------------------------|
| Exterior Features | Fire Pit, Private Yard |
| Lot Description | See Remarks |
| Roof | Asphalt Shingle |
| Construction | Vinyl Siding |
| Foundation | Poured Concrete |

Additional Information

| | |
|----------------|---------------------|
| Date Listed | May 15th, 2025 |
| Days on Market | 8 |
| Zoning | Recreational Resort |

Listing Details

| | |
|----------------|------------------------------------|
| Listing Office | RE/MAX real estate central alberta |
|----------------|------------------------------------|

Data is supplied by Pillar 9â„¢ MLS® System. Pillar 9â„¢ is the owner of the copyright in its MLS® System. Data is deemed reliable but is not guaranteed accurate by Pillar 9â„¢. The trademarks MLS®, Multiple Listing Service® and the associated logos are owned by The Canadian Real Estate Association (CREA) and identify the quality of services provided by real estate professionals who are members of CREA. Used under license.