

# \$215,000 - 27, 298 Somerset Way Se, Medicine Hat

MLS® #A2221576

**\$215,000**

2 Bedroom, 2.00 Bathroom, 1,127 sqft

Residential on 0.00 Acres

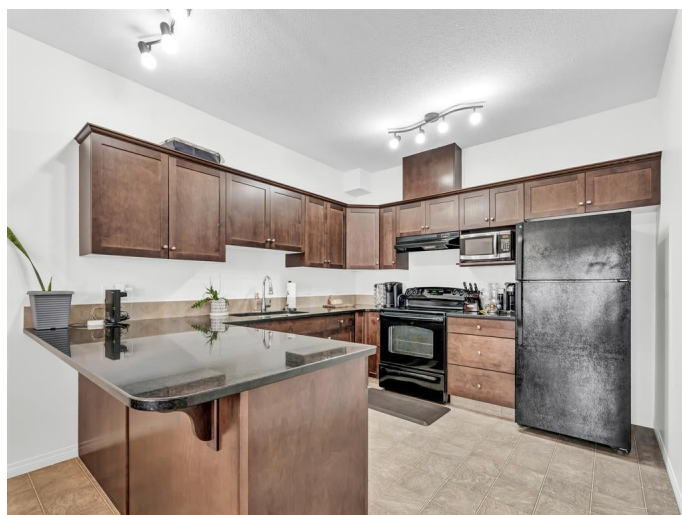
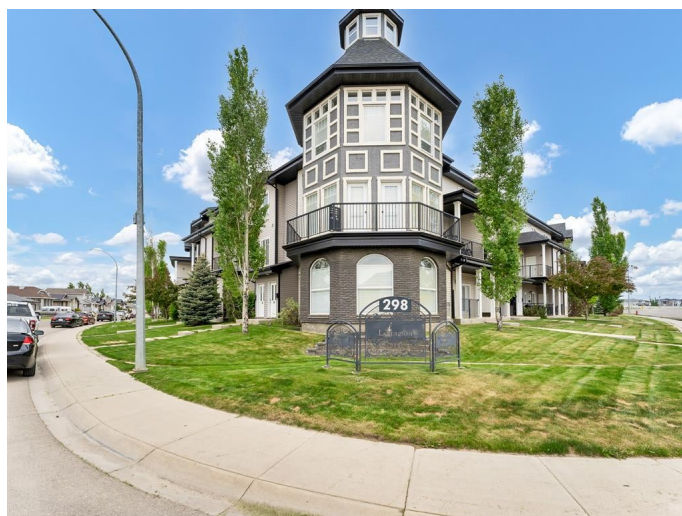
Southland, Medicine Hat, Alberta

Lovely 2 bedroom 1 and ½ bath Lexington condo in the desirable Somerset area. From the entry, you walk up stairs and are greeted by the open concept living space. The kitchen has granite counter tops, plenty of espresso cabinets and a pantry cupboard. The dishwasher is 1 year old. The dining area is roomy with a door out to a deck, which has a storage room attached. There is a half bath on this floor as well. Ascending to the upper level, there is a primary bedroom, with 2 closets, 2nd bedroom, 4 piece bath and a stackable washer/dryer. There is an assigned parking stall. This condo has its own personal gym, right across from this unit. This area is centrally located to shopping, parks and schools. Condo fee is \$415.49 and includes water, gas and common area electric. Call today to view this great condo!

Built in 2007

## Essential Information

MLS® #	A2221576
Price	\$215,000
Bedrooms	2
Bathrooms	2.00
Full Baths	1
Half Baths	1
Square Footage	1,127
Acres	0.00



Year Built	2007
Type	Residential
Sub-Type	Row/Townhouse
Style	3 Storey
Status	Active

### Community Information

Address	27, 298 Somerset Way Se
Subdivision	Southland
City	Medicine Hat
County	Medicine Hat
Province	Alberta
Postal Code	T1B0E9

### Amenities

Amenities	Parking, Snow Removal, Trash, Visitor Parking, Fitness Center
Parking Spaces	1
Parking	Parking Lot, Plug-In, Stall

### Interior

Interior Features	Granite Counters, Open Floorplan, Pantry, See Remarks, Separate Entrance
Appliances	Dishwasher, Range Hood, Refrigerator, Stove(s), Washer/Dryer
Heating	Forced Air, Natural Gas
Cooling	Central Air
# of Stories	3
Basement	None

### Exterior

Exterior Features	Private Entrance
Lot Description	Street Lighting
Roof	Asphalt Shingle
Construction	Brick, Vinyl Siding
Foundation	Poured Concrete

### Additional Information

Date Listed	May 21st, 2025
Days on Market	10
Zoning	R-MD

HOA Fees                    415  
HOA Fees Freq.        MON

**Listing Details**

Listing Office            ROYAL LEPAGE COMMUNITY REALTY

Data is supplied by Pillar 9â„¢ MLSÂ® System. Pillar 9â„¢ is the owner of the copyright in its MLSÂ® System. Data is deemed reliable but is not guaranteed accurate by Pillar 9â„¢. The trademarks MLSÂ®, Multiple Listing ServiceÂ® and the associated logos are owned by The Canadian Real Estate Association (CREA) and identify the quality of services provided by real estate professionals who are members of CREA. Used under license.