

# \$379,900 - 15 Opal Avenue, Red Deer

MLS® #A2222129

## \$379,900

2 Bedroom, 3.00 Bathroom, 2,161 sqft

Residential on 0.17 Acres

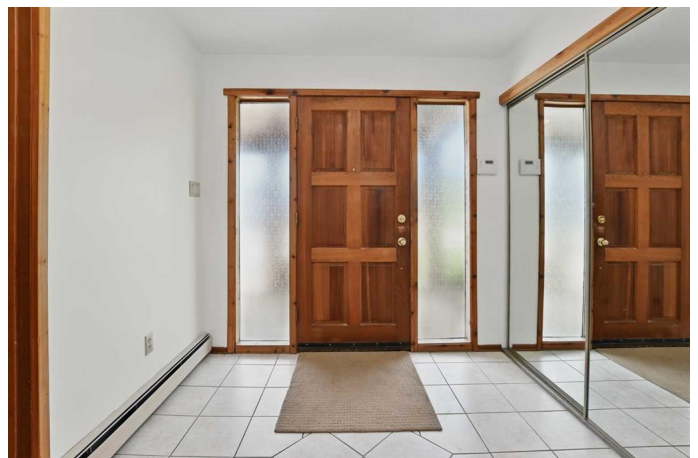
Oriole Park, Red Deer, Alberta

Located on a quiet street looking out onto a wooded green area, this uniquely designed home is sure to impress. With a spacious tiled entry, the main floor has a good sized family room w/ a brick faced wood burning fireplace, a wet bar with lots of cabinets, a murphy bed and patio doors into the "flex room". Main floor also features a sauna (as is), and a 3 pce bathroom. Upstairs has the living room w/ gas fireplace, bay window, cedar vaulted ceilings and patio doors out to a west facing deck w/ glass & aluminum railings. The kitchen has lots of cabinets, a full tile backsplash, wood beams in the ceiling and there is main floor laundry (washer & dryer are included). There is a 3 pce bath on this upper floor as well with a jet tub (as is). 2 good sized bedrooms and the primary has a 2 pce ensuite and patio doors out to another deck overlooking the back yard. The home has just been painted and new carpet in the 2nd bedroom & stairs. Nice sized yard with several trees.

Built in 1977

## Essential Information

MLS® #	A2222129
Price	\$379,900
Bedrooms	2
Bathrooms	3.00
Full Baths	2
Half Baths	1



Square Footage	2,161
Acres	0.17
Year Built	1977
Type	Residential
Sub-Type	Detached
Style	Bi-Level
Status	Active

### Community Information

Address	15 Opal Avenue
Subdivision	Oriole Park
City	Red Deer
County	Red Deer
Province	Alberta
Postal Code	T4P 1S9

### Amenities

Parking Spaces	1
Parking	Garage Faces Front, Heated Garage, Single Garage Attached, Workshop in Garage
# of Garages	1

### Interior

Interior Features	Beamed Ceilings, Pantry, Sauna, Storage, Vaulted Ceiling(s), Wet Bar
Appliances	Dishwasher, Dryer, Oven-Built-In, Range Hood, Refrigerator, Washer, Window Coverings, Electric Cooktop
Heating	Baseboard, Hot Water
Cooling	None
Fireplace	Yes
# of Fireplaces	2
Fireplaces	Brick Facing, Family Room, Gas, Living Room, Wood Burning, Raised Hearth
Basement	None

### Exterior

Exterior Features	Private Yard
Lot Description	Back Lane, Landscaped
Roof	Asphalt Shingle
Construction	Brick, Wood Siding

Foundation	Slab
------------	------

### **Additional Information**

Date Listed	May 20th, 2025
-------------	----------------

Days on Market	2
----------------	---

Zoning	R1
--------	----

### **Listing Details**

Listing Office	Century 21 Maximum
----------------	--------------------

Data is supplied by Pillar 9â„¢ MLS® System. Pillar 9â„¢ is the owner of the copyright in its MLS® System. Data is deemed reliable but is not guaranteed accurate by Pillar 9â„¢. The trademarks MLS®, Multiple Listing Service® and the associated logos are owned by The Canadian Real Estate Association (CREA) and identify the quality of services provided by real estate professionals who are members of CREA. Used under license.