

# \$709,900 - 101, 1921 27 Street Sw, Calgary

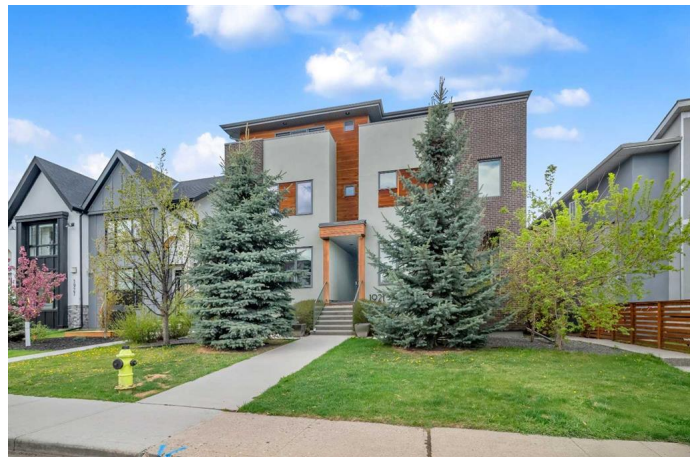
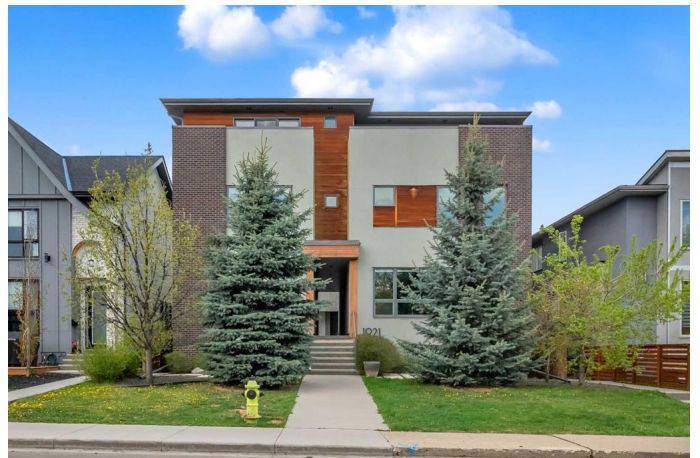
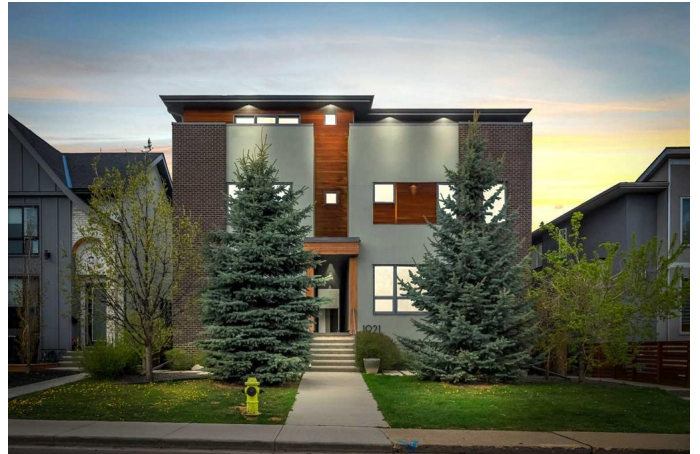
MLS® #A2223034

**\$709,900**

3 Bedroom, 3.00 Bathroom, 1,818 sqft  
Residential on 0.00 Acres

Killarney/Glengarry, Calgary, Alberta

Sophisticated, stylish, and superbly located, this beautifully customized townhome in the heart of Killarney offers elevated inner-city living across three thoughtfully designed levels. Tucked into a unique five-unit enclave, this home is the only one with windows facing east, west and south on all three floors, creating a bright, airy atmosphere and providing rare natural light and privacy. Step inside to a spacious open-concept main floor that blends modern design with functional comfort. A striking linear gas fireplace is flanked by built-in cabinetry and an extended wood mantel, anchoring the living space in warmth and style. Oversized windows overlook the central courtyard, while a private front entry offers excellent separation from neighboring units. The gourmet kitchen features sleek white cabinetry, a gas stove, stainless steel appliances and a large island with seating, ideal for entertaining or daily living. A central dining area, designer lighting and a convenient powder room complete this level. Upstairs, the second floor offers flexibility for families, guests, or roommates with two spacious bedrooms, a full bath, a bonus room/lounge and a laundry area. The entire top floor is dedicated to the primary suite – a private retreat featuring two sunny balconies, one for east-facing morning light and another west-facing for evening sunsets. This level also includes a custom walk-in closet and a spa-inspired 5-piece ensuite with a double vanity, soaker tub, and glass shower for



ultimate luxury. Enjoy secure underground parking, a large storage locker and the peace of mind of low-maintenance living in a well-managed, boutique complex. The Hot water tank is replaced with new hot water tank last month . This exceptional location supports your active lifestyle – walk to transit, parks, the Killarney Aquatic Centre, schools and local amenities. Plus, you're minutes from downtown, the Bow River and vibrant Marda Loop. A rare opportunity to own a truly unique and modern townhome in one of Calgary's most connected communities.

Built in 2017

### Essential Information

MLS® #	A2223034
Price	\$709,900
Bedrooms	3
Bathrooms	3.00
Full Baths	2
Half Baths	1
Square Footage	1,818
Acres	0.00
Year Built	2017
Type	Residential
Sub-Type	Row/Townhouse
Style	3 Storey
Status	Active

### Community Information

Address	101, 1921 27 Street Sw
Subdivision	Killarney/Glengarry
City	Calgary
County	Calgary
Province	Alberta
Postal Code	T3E2E6

### Amenities

Amenities	Other
Parking Spaces	1
Parking	Underground

## Interior

Interior Features	Double Vanity, High Ceilings, Kitchen Island, No Animal Home, No Smoking Home, Open Floorplan, Pantry, Quartz Counters, Separate Entrance, Vinyl Windows, Walk-In Closet(s), Wired for Data, Wired for Sound, Recessed Lighting
Appliances	Dishwasher, Garage Control(s), Microwave, Range Hood, Refrigerator, Washer/Dryer, Window Coverings, Gas Range
Heating	High Efficiency, Forced Air, Natural Gas, Central, Fireplace(s)
Cooling	None
Fireplace	Yes
# of Fireplaces	1
Fireplaces	Gas
Basement	None

## Exterior

Exterior Features	Courtyard
Lot Description	Back Lane
Roof	Rubber
Construction	Concrete, Vinyl Siding, Wood Frame, Brick
Foundation	Poured Concrete

## Additional Information

Date Listed	May 21st, 2025
Days on Market	50
Zoning	M-C1

## Listing Details

Listing Office	RE/MAX Real Estate (Mountain View)
----------------	------------------------------------

Data is supplied by Pillar 9â„¢ MLS® System. Pillar 9â„¢ is the owner of the copyright in its MLS® System. Data is deemed reliable but is not guaranteed accurate by Pillar 9â„¢. The trademarks MLS®, Multiple Listing Service® and the associated logos are owned by The Canadian Real Estate Association (CREA) and identify the quality of services provided by real estate professionals who are members of CREA. Used under license.