

\$79,500 - Lot# 2a, 44 Banen Way, Rural Vermilion River, County of

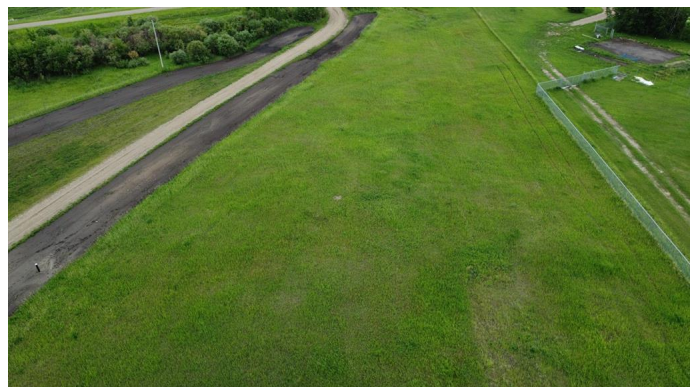
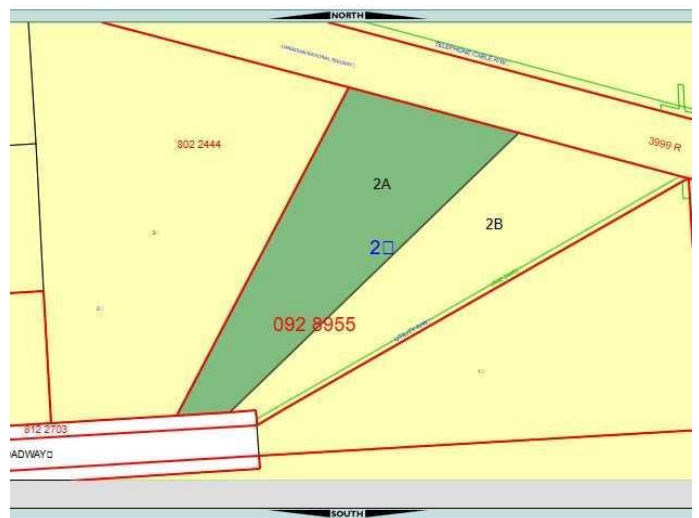
MLS® #A2225031

\$79,500

0 Bedroom, 0.00 Bathroom,
Land on 2.56 Acres

Brennan Park, Rural Vermilion River, County of, Alberta

Very Large pie-shaped lot that is open & ready for quick development. Accessible location only 1.75mi from the Town of Vermilion. Located on a quiet road in a pleasant neighborhood acreage subdivision. Road is paved to the property entrance. Convenient to enjoy, store your camper, etc. Could develop readily in 2025 or over time. What's your Dream: House, Shouse or Quick getaway spot?



Essential Information

MLS® #	A2225031
Price	\$79,500
Bathrooms	0.00
Acres	2.56
Type	Land
Sub-Type	Residential Land
Status	Active

Community Information

Address	Lot# 2a, 44 Banen Way
Subdivision	Brennan Park
City	Rural Vermilion River, County of
County	Vermilion River, County of
Province	Alberta
Postal Code	T9X 1X2

Amenities

Utilities Electricity at Lot Line, Natural Gas at Lot Line

Exterior

Lot Description Cleared, Pie Shaped Lot

School Information

District East Central Alberta CSSR Division No. 16

Additional Information

Date Listed May 27th, 2025

Days on Market 3

Zoning Country Residential - (CR

Listing Details

Listing Office Real Estate Centre - Vermilion

Data is supplied by Pillar 9â„¢ MLS® System. Pillar 9â„¢ is the owner of the copyright in its MLS® System. Data is deemed reliable but is not guaranteed accurate by Pillar 9â„¢. The trademarks MLS®, Multiple Listing Service® and the associated logos are owned by The Canadian Real Estate Association (CREA) and identify the quality of services provided by real estate professionals who are members of CREA. Used under license.