

# \$1,168,000 - 160 Maple Court Crescent Se, Calgary

MLS® #A2225945

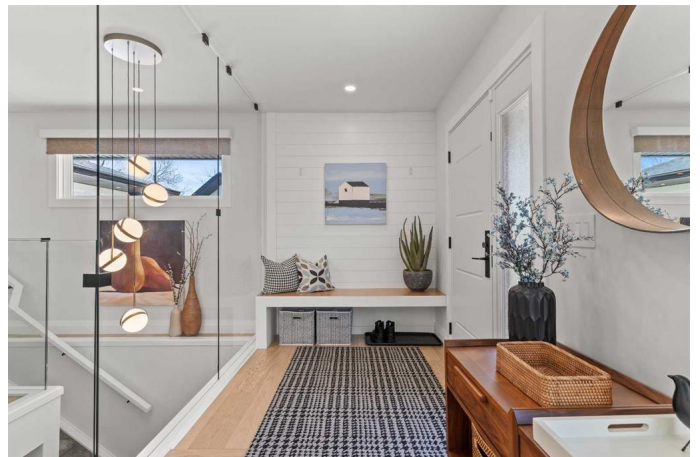
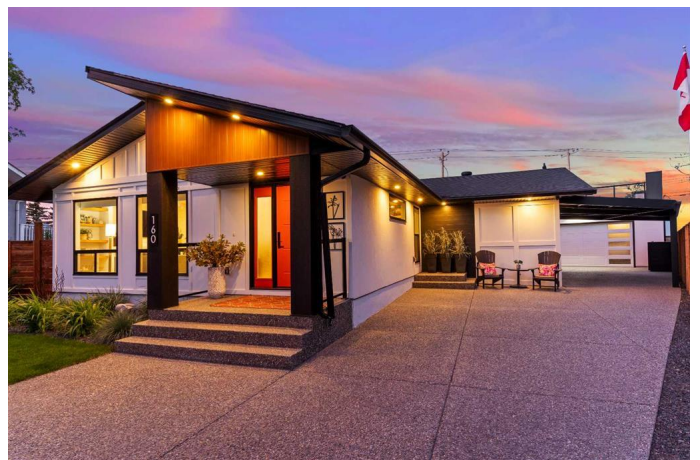
**\$1,168,000**

4 Bedroom, 5.00 Bathroom, 1,516 sqft

Residential on 0.15 Acres

Maple Ridge, Calgary, Alberta

4 BEDROOMS | 4 1/2 BATHROOMS | BUNGALOW | 2,571 SQFT OF LIVING SPACE | OVERSIZED DOUBLE GARAGE | MASSIVE DECK WITH CITY VIEWS | FULLY RENOVATED WITH MODERN LUXURY FINISHES | Welcome to this extraordinary bungalow in the highly sought-after community of Maple Ridge, offering 2,571 sqft of total living space with 4 spacious bedrooms and 4.5 bathrooms. This home has been meticulously renovated from the studs up, showcasing modern luxury at its finest. The spacious living room is highlighted by a beautiful glass wall that seamlessly connects to the designer kitchen, which features stunning cabinetry, a massive quartz island, gas range with pot filler and elegant gold accents. The main floor offers two large bedrooms with gorgeous ensuites and custom walk-in closets with builtins, including a master bedroom with a private porch, perfect for relaxation. The fully finished lower level is an entertainer's dream, with a large recreation area and bar. This level also includes two additional bedrooms, adding ample space for family or guests. One bedroom has been converted into a convenient home gym with rubber flooring. Step outside to the professionally landscaped yard featuring an underground sprinkler system, ensuring low-maintenance beauty. The detached oversized double car drive through garage features epoxy flooring and ceiling storage to keep organized. Above the garage, the massive 40-person deck that



offers breathtaking city views and overlooks the Maple Ridge Golf Course is the perfect place to entertain or relax after a long day's work. No detail has been missed—this home also features numerous upgrades including a brand-new designer metal front door, new 5â€• eavestroughs and downspouts, and a brand-new air conditioner. The new Hardie Board sheds match the home perfectly, and there is a custom garbage container receptacle for added convenience. Additional features include a powder-coated aluminum carport and a comprehensive security system with cameras to keep your home monitored at all times. Located on a quiet street in one of Calgary's most desirable neighbourhoods, this home is a true masterpiece. Itâ€™s conveniently situated close to parks, golf courses, schools, and shopping. A rare find—schedule your showing today!

Built in 1967

**Essential Information**

MLS® #	A2225945
Price	\$1,168,000
Bedrooms	4
Bathrooms	5.00
Full Baths	4
Half Baths	1
Square Footage	1,516
Acres	0.15
Year Built	1967
Type	Residential
Sub-Type	Detached
Style	Bungalow
Status	Active

**Community Information**

Address	160 Maple Court Crescent Se
Subdivision	Maple Ridge

City	Calgary
County	Calgary
Province	Alberta
Postal Code	T2J 1W1

### **Amenities**

Parking Spaces	6
Parking	Concrete Driveway, Covered, Double Garage Detached, Oversized, Parking Pad, Drive Through
# of Garages	2

### **Interior**

Interior Features	Bar, Breakfast Bar, Built-in Features, Central Vacuum, Closet Organizers, Double Vanity, Kitchen Island, No Animal Home, No Smoking Home, Open Floorplan, Quartz Counters, Storage, Walk-In Closet(s)
Appliances	Bar Fridge, Built-In Oven, Central Air Conditioner, Dishwasher, Dryer, Garage Control(s), Gas Range, Range Hood, Refrigerator, Window Coverings
Heating	Forced Air
Cooling	Central Air
Fireplace	Yes
# of Fireplaces	1
Fireplaces	Gas, Living Room
Has Basement	Yes
Basement	Finished, Full

### **Exterior**

Exterior Features	BBQ gas line, Other, Misting System
Lot Description	Back Lane, Back Yard, Landscaped, Level, Low Maintenance Landscape, No Neighbours Behind, Pie Shaped Lot, Underground Sprinklers, Views, On Golf Course
Roof	Asphalt Shingle
Construction	Composite Siding
Foundation	Poured Concrete

### **Additional Information**

Date Listed	May 30th, 2025
Days on Market	6
Zoning	R-CG

# Listing Details

Listing Office                      RE/MAX First

Data is supplied by Pillar 9â„¢ MLS® System. Pillar 9â„¢ is the owner of the copyright in its MLS® System. Data is deemed reliable but is not guaranteed accurate by Pillar 9â„¢. The trademarks MLS®, Multiple Listing Service® and the associated logos are owned by The Canadian Real Estate Association (CREA) and identify the quality of services provided by real estate professionals who are members of CREA. Used under license.