

\$609,900 - 57 Bardwell Way, Sylvan Lake

MLS® #A2226363

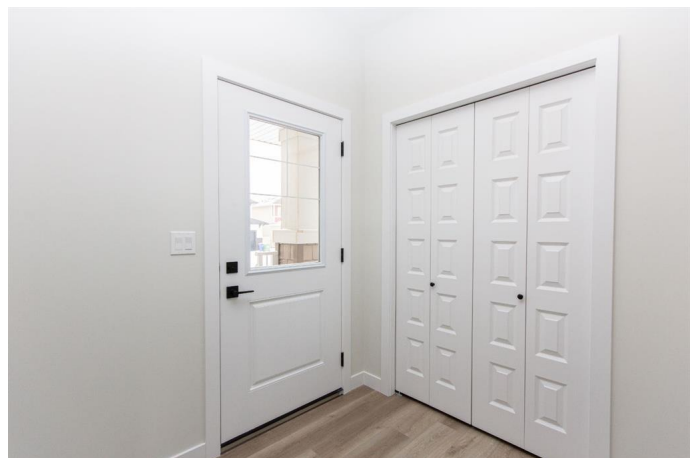
\$609,900

3 Bedroom, 3.00 Bathroom, 2,135 sqft

Residential on 0.12 Acres

Beacon Hill, Sylvan Lake, Alberta

Situated in sought after Beacon Hill and built by Laebon Homes, this brand new 2 Storey could be your family's next home in Sylvan Lake! This best selling Lyndon floor plan offers a wide open living space with 9' main floor ceilings, large bedrooms, 2nd floor laundry, and a large upper floor bonus room. A large entry way flows into the spacious living space, and the kitchen features raised cabinetry accented with quartz counter tops, stainless steel appliances, a large island with eating bar, and a convenient walk-in pantry. The second floor offers a large primary suite with a spa-like 5 pce ensuite with a free standing soaker tub, dual sinks, 5' shower, a private water closet, and a spacious walk in closet. The second and third bedrooms are generously sized, and you'll love ending your day in the huge bonus room which makes the perfect space for family movie nights or a relaxing space to wind down. The attached garage is insulated, drywalled, and taped. If you need more space, the builder can complete the basement development for you, and allowances can also be provided for blinds, and a washer and dryer to make this a completely move in ready package. Poured concrete front driveway, front sod, and rear topsoil are included in the price and will be completed as weather permits. 1 year builder warranty and 10 year Alberta New Home Warranty are included. Taxes have yet to be assessed. This home has an estimated completion date of August 2025. Photos and renderings are examples from a similar home



built previously and do not necessarily reflect finished and colours used in this home.

Built in 2025

Essential Information

MLS® #	A2226363
Price	\$609,900
Bedrooms	3
Bathrooms	3.00
Full Baths	2
Half Baths	1
Square Footage	2,135
Acres	0.12
Year Built	2025
Type	Residential
Sub-Type	Detached
Style	2 Storey
Status	Active

Community Information

Address	57 Bardwell Way
Subdivision	Beacon Hill
City	Sylvan Lake
County	Red Deer County
Province	Alberta
Postal Code	T4S 0V4

Amenities

Parking Spaces	4
Parking	Concrete Driveway, Double Garage Attached, Off Street
# of Garages	2

Interior

Interior Features	Closet Organizers, High Ceilings, Kitchen Island, No Animal Home, No Smoking Home, Open Floorplan, Pantry, Quartz Counters, Separate Entrance, Storage, Walk-In Closet(s), Breakfast Bar
Appliances	Dishwasher, Garage Control(s), Microwave Hood Fan, Refrigerator, Stove(s)

Heating	Forced Air, Natural Gas
Cooling	None
Has Basement	Yes
Basement	Full, Unfinished

Exterior

Exterior Features	Private Yard, Private Entrance
Lot Description	Back Lane, Back Yard, Rectangular Lot, Front Yard, Interior Lot
Roof	Asphalt Shingle
Construction	Vinyl Siding, Wood Frame, Concrete
Foundation	Poured Concrete

Additional Information

Date Listed	June 4th, 2025
Days on Market	44
Zoning	R1A

Listing Details

Listing Office	RE/MAX real estate central alberta
----------------	------------------------------------

Data is supplied by Pillar 9â„¢ MLS® System. Pillar 9â„¢ is the owner of the copyright in its MLS® System. Data is deemed reliable but is not guaranteed accurate by Pillar 9â„¢. The trademarks MLS®, Multiple Listing Service® and the associated logos are owned by The Canadian Real Estate Association (CREA) and identify the quality of services provided by real estate professionals who are members of CREA. Used under license.