

# \$950,000 - 125 Magenta Crescent, Chestermere

MLS® #A2227367

**\$950,000**

4 Bedroom, 4.00 Bathroom, 2,570 sqft

Residential on 0.14 Acres

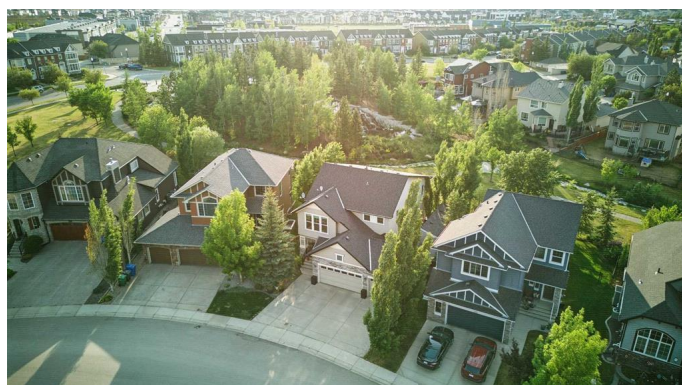
Rainbow Falls, Chestermere, Alberta

Welcome to your dream home in the heart of Chestermere, where the gentle sound of cascading water sets the tone for everyday serenity. Backing directly onto the stunning falls, this exquisite 4-bedroom, 3.5-bathroom home, with over 3500 square feet of developed living space, offers the perfect balance of nature, elegance, and modern living.

Step inside to discover a thoughtfully designed open-concept layout, featuring a gorgeous modern kitchen that flows seamlessly into an inviting living room adorned with full wall built-ins. The double-sided fireplace adds warmth and ambiance to both the living area and the elegant formal dining room – ideal for cozy evenings and entertaining guests.

Upstairs, a spacious bonus room provides a versatile retreat, while two generous-sized bedrooms offer comfort for family or guests. The primary suite is a true oasis, complete with a spa-inspired ensuite featuring a walk-in shower, large soaker tub, and a spacious walk-in closet. Drift to sleep each night to the soothing sounds of the waterfall just beyond your window.

A fully developed basement offers additional living space, ample storage, and room to grow. It also includes a private den – perfect for a home office or study – and the triple car garage ensures there's space for all your



vehicles and gear.

Set on a quiet street, this home’s backyard opens directly onto the picturesque falls, with walking and biking paths that connect you to everything Chestermere has to offer. Whether you’re starting your day with a morning walk or enjoying a sunset from your patio, the natural beauty of Rainbow Falls is your everyday backdrop.

Luxury meets tranquility in this one-of-a-kind home – experience the ultimate lifestyle in Rainbow Falls.

OPEN HOUSE SATURDAY JUNE 28  
12:00PM - 4:00PM

Built in 2010

**Essential Information**

MLS® #	A2227367
Price	\$950,000
Bedrooms	4
Bathrooms	4.00
Full Baths	3
Half Baths	1
Square Footage	2,570
Acres	0.14
Year Built	2010
Type	Residential
Sub-Type	Detached
Style	2 Storey
Status	Active

**Community Information**

Address	125 Magenta Crescent
Subdivision	Rainbow Falls
City	Chestermere
County	Chestermere

Province	Alberta
Postal Code	T1X0K9

### Amenities

Parking Spaces	6
Parking	Triple Garage Attached
# of Garages	3
Waterfront	See Remarks

### Interior

Interior Features	See Remarks
Appliances	Built-In Oven, Built-In Refrigerator, Dishwasher, Garage Control(s), Microwave, Range Hood, Window Coverings, Built-In Gas Range, Double Oven
Heating	Forced Air
Cooling	Central Air
Fireplace	Yes
# of Fireplaces	3
Fireplaces	Gas
Has Basement	Yes
Basement	Finished, Full

### Exterior

Exterior Features	BBQ gas line, Fire Pit, Garden
Lot Description	Backs on to Park/Green Space, Garden, No Neighbours Behind
Roof	Asphalt Shingle
Construction	Stone, Vinyl Siding, Wood Frame
Foundation	Poured Concrete

### Additional Information

Date Listed	June 4th, 2025
Days on Market	51
Zoning	R-1

### Listing Details

Listing Office	RE/MAX Key
----------------	------------

Data is supplied by Pillar 9â„¢ MLSÂ® System. Pillar 9â„¢ is the owner of the copyright in its MLSÂ® System. Data is deemed reliable but is not guaranteed accurate by Pillar 9â„¢. The trademarks MLSÂ®, Multiple Listing ServiceÂ® and the associated logos are owned by The Canadian Real Estate Association (CREA) and identify the quality of services provided by real estate professionals who are members of CREA. Used under license.