

\$208,000 - On Township Road 422 Lot 11, Rural Ponoka County

MLS® #A2228682

\$208,000

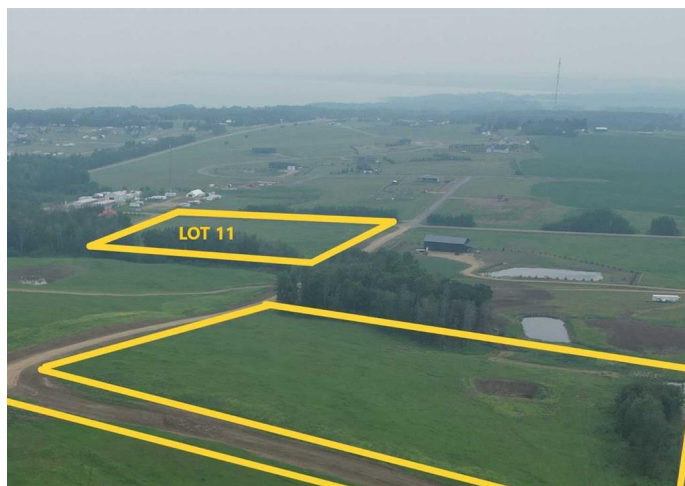
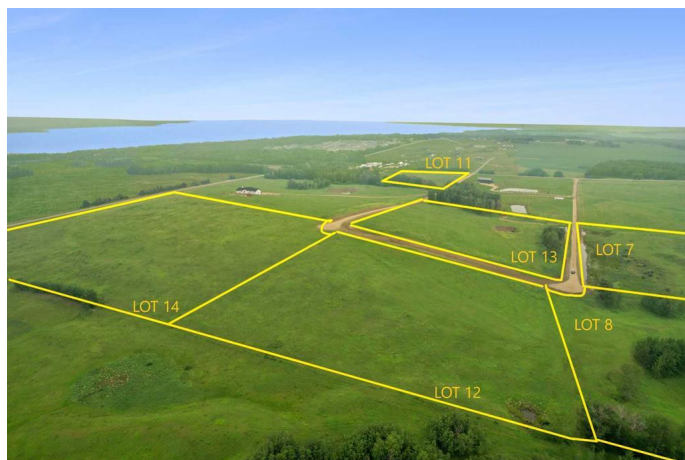
0 Bedroom, 0.00 Bathroom,
Land on 8.92 Acres

NONE, Rural Ponoka County, Alberta

This 8.92+- acres of near-lakeside property sits just one mile up the road from the shoreline at Parkland Beach, within the newly developing Siebel Subdivision. This six-lot bare land subdivision offers a rare opportunity to build in a peaceful setting with lake life just minutes away. Lot sizes range from 8.39+/- acres up to 20+/- acres, with prices ranging from \$158,000 to \$344,00, depending on size and services. These lots may be purchased with full services for an additional \$25,000. This includes power, gas, and an access road with culvert at the buyer's preferred location within the property.

This is a newly developed subdivision—clean, organized, and thoughtfully laid out. Some parcels enjoy direct, elevated views of Gull Lake—ideal for taking in sunsets or planning a home that makes the most of the scenery. All lots are within moments of the public boat dock, fishing spots, swimming beach, and a full range of water sports access, making this an excellent choice for those drawn to lake living.

Access is straightforward and simple—no gravel travel, no confusing turns—just direct approach off paved roads. Located within Ponoka County, the area blends quiet, rural character with easy access to year-round recreation. Gull Lake Public Beach and Gull Lake Golf Course are just down the road, offering swimming, boating, and summer



community events.

Conveniently positioned just 10 minutes to Rimbey and Bentley, this location combines ease of access with the freedom of country living.

Essential Information

MLS® #	A2228682
Price	\$208,000
Bathrooms	0.00
Acres	8.92
Type	Land
Sub-Type	Residential Land
Status	Active

Community Information

Address	On Township Road 422 Lot 11
Subdivision	NONE
City	Rural Ponoka County
County	Ponoka County
Province	Alberta
Postal Code	T0C 2J0

Exterior

Lot Description	Near Golf Course
-----------------	------------------

Additional Information

Date Listed	June 13th, 2025
Days on Market	8
Zoning	CR

Listing Details

Listing Office	RE/MAX real estate central alberta
----------------	------------------------------------

Data is supplied by Pillar 9â„¢ MLS® System. Pillar 9â„¢ is the owner of the copyright in its MLS® System. Data is deemed reliable but is not guaranteed accurate by Pillar 9â„¢. The trademarks MLS®, Multiple Listing Service® and the associated logos are owned by The Canadian Real Estate Association (CREA) and identify the quality of services provided by real estate professionals who are members of CREA. Used under license.