

# \$398,000 - 415, 1108 6 Avenue Sw, Calgary

MLS® #A2229090

**\$398,000**

2 Bedroom, 2.00 Bathroom, 1,173 sqft  
Residential on 0.00 Acres

Downtown West End, Calgary, Alberta

Openhouse : July 1st , : 3 pm am to 7 pm ;  
Experience Exceptional Urban Living at The Marquis

Welcome to The Marquis, a coveted riverfront address nestled in Calgary's dynamic West End. This 2-bedroom, 2-bathroom condo offers a rare blend of tranquility and convenience—set in a quiet location just steps from everything the city has to offer, including breathtaking views of the Bow River.

Prime Location Highlights:

Direct access to Bow River

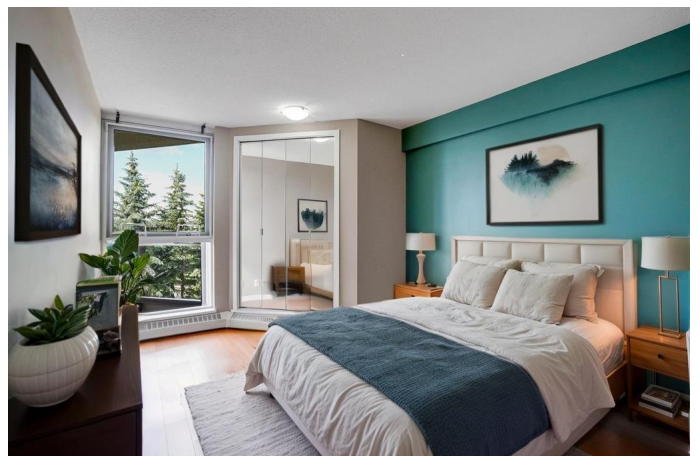
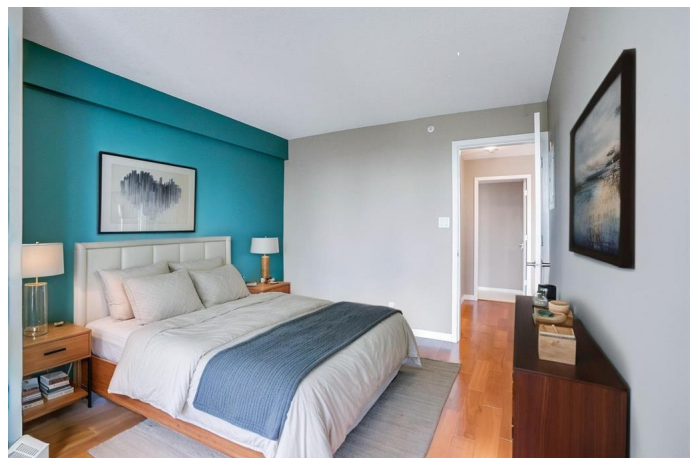
Pathways—perfect for walking, running, or cycling

C-Train station within Calgary's free fare zone

Walk to the vibrant shops, cafés, and culture of Kensington across the river

Inside, the well-designed layout ensures privacy with bedrooms on opposite sides of a bright, open living space. The spacious primary suite accommodates a king-size bed, showcases river views through large windows, and offers direct access to a private, low-maintenance balcony. The living room features floor-to-ceiling windows and a cozy corner gas fireplace—an ideal spot to unwind and take in the urban skyline.

Stylish & Functional Kitchen:



Granite countertops and cherry wood cabinetry

Stainless steel appliances, including newly updated fridge, washer, and dryer

Generous in-suite storage, plus a separate basement locker

Additional Perks:

Extra-wide titled underground parking stall located next to the elevator

Recently renovated building common areas

Fully equipped fitness centre

Stylish social lounge with new furnishings

Secure entry, underground parking, bike storage

Beautifully maintained garden and green space

This is a rare opportunity to own a river-view condo in one of Calgary's most sought-after urban communities.

Book your private showing today with your favourite REALTOR!

Built in 2001

### Essential Information

MLS® #	A2229090
Price	\$398,000
Bedrooms	2
Bathrooms	2.00
Full Baths	2
Square Footage	1,173
Acres	0.00

Year Built	2001
Type	Residential
Sub-Type	Apartment
Style	Single Level Unit
Status	Active

### Community Information

Address	415, 1108 6 Avenue Sw
Subdivision	Downtown West End
City	Calgary
County	Calgary
Province	Alberta
Postal Code	T2P5K1

### Amenities

Amenities	Bicycle Storage, Elevator(s), Fitness Center, Park, Parking, Party Room, Recreation Facilities, Secured Parking, Snow Removal, Storage, Trash, Visitor Parking, Gazebo, Recreation Room
Parking Spaces	1
Parking	Heated Garage, Parkade, Underground

### Interior

Interior Features	Ceiling Fan(s), Granite Counters
Appliances	Dishwasher, Dryer, Electric Stove, Microwave Hood Fan, Refrigerator, Washer, Window Coverings
Heating	Baseboard, Natural Gas
Cooling	None
Fireplace	Yes
# of Fireplaces	1
Fireplaces	Gas
# of Stories	16

### Exterior

Exterior Features	Balcony, Courtyard, Storage
Construction	Concrete

### Additional Information

Date Listed	June 15th, 2025
Days on Market	48
Zoning	DC (pre 1P2007)

**Listing Details**

Listing Office                    eXp Realty

Data is supplied by Pillar 9â„¢ MLSÂ® System. Pillar 9â„¢ is the owner of the copyright in its MLSÂ® System. Data is deemed reliable but is not guaranteed accurate by Pillar 9â„¢. The trademarks MLSÂ®, Multiple Listing ServiceÂ® and the associated logos are owned by The Canadian Real Estate Association (CREA) and identify the quality of services provided by real estate professionals who are members of CREA. Used under license.