

\$780,000 - 14 Wyndham Park View, Carseland

MLS® #A2230429

\$780,000

3 Bedroom, 3.00 Bathroom, 1,521 sqft

Residential on 0.21 Acres

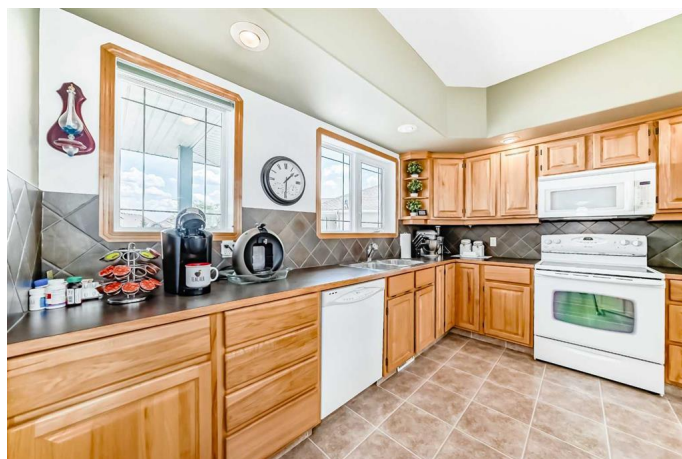
NONE, Carseland, Alberta

Visit REALTOR® website for additional information. When it comes to location, this home has everything an outdoor enthusiast needs! World-class fishing on the Bow River (Speargrass is just North of it), camping at the Provincial Park, & the Speargrass Golf Course with a Clubhouse for dining & events! This impeccably kept 3-bedroom walkout bungalow features an open concept main floor with huge kitchen & ample counter-space! The dining room boasts Rocky Mountain views too! It's got in-floor lit staircase to the massive basement recreation room with pool table (staying), family room & in-floor heating! Heated garage w separate entrance! Gorgeous landscaped low maintenance lawn & hot tub for relaxing. New shingles installed 2024/new solar panels installed 2025 for long-term energy savings and efficiency. One of the largest pie lots in Speargrass. Carseland is set for job growth & new industry!

Built in 2003

Essential Information

MLS® #	A2230429
Price	\$780,000
Bedrooms	3
Bathrooms	3.00
Full Baths	3
Square Footage	1,521
Acres	0.21



Year Built	2003
Type	Residential
Sub-Type	Detached
Style	Bungalow
Status	Active

Community Information

Address	14 Wyndham Park View
Subdivision	NONE
City	Carseland
County	Wheatland County
Province	Alberta
Postal Code	T0J 0M0

Amenities

Parking Spaces	2
Parking	Double Garage Detached
# of Garages	2

Interior

Interior Features	Bookcases, Built-in Features, Central Vacuum, High Ceilings, Kitchen Island, No Animal Home, Open Floorplan, Pantry, See Remarks, Storage, Laminate Counters, Natural Woodwork
Appliances	Central Air Conditioner, Dishwasher, Electric Range, Garage Control(s), Microwave, Range Hood, Refrigerator, See Remarks, Washer/Dryer, Window Coverings, Range
Heating	In Floor, Fireplace(s), Forced Air, See Remarks, Wood Stove
Cooling	Central Air
Fireplace	Yes
# of Fireplaces	3
Fireplaces	Gas, Wood Burning Stove
Has Basement	Yes
Basement	Finished, Full

Exterior

Exterior Features	Fire Pit, Garden, Other, Storage
Lot Description	Back Yard, Backs on to Park/Green Space, Close to Clubhouse, Cul-De-Sac, Few Trees, Front Yard, Garden, Landscaped, Low Maintenance Landscape, No Neighbours Behind, Pie Shaped Lot, See Remarks, Street Lighting, Views, On Golf Course

Roof	Asphalt, See Remarks
Construction	Stone, Vinyl Siding, Wood Frame
Foundation	Poured Concrete

Additional Information

Date Listed	June 12th, 2025
Days on Market	20
Zoning	S-LDR

Listing Details

Listing Office	PG Direct Realty Ltd.
----------------	-----------------------

Data is supplied by Pillar 9â„¢ MLS® System. Pillar 9â„¢ is the owner of the copyright in its MLS® System. Data is deemed reliable but is not guaranteed accurate by Pillar 9â„¢. The trademarks MLS®, Multiple Listing Service® and the associated logos are owned by The Canadian Real Estate Association (CREA) and identify the quality of services provided by real estate professionals who are members of CREA. Used under license.