

# \$799,900 - 148 Chaparral Valley Terrace Se, Calgary

MLS® #A2233629

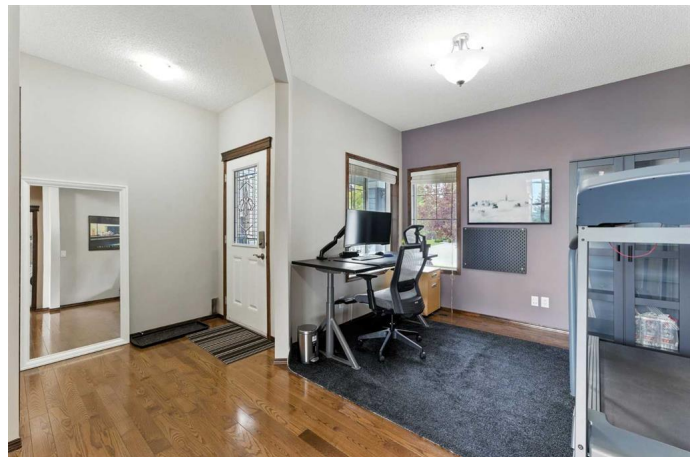
**\$799,900**

3 Bedroom, 3.00 Bathroom, 2,227 sqft

Residential on 0.10 Acres

Chaparral, Calgary, Alberta

Open-to-Above Design | Backs onto Green Space & Pathway | Sun-Socked South Yard. Welcome to this stunning home with open-to-above design in the highly sought-after community of Chaparral Valley, backing directly onto green space and a scenic pathway. Step inside to a bright, open-concept layout featuring soaring 18'™ ceilings in the living room and a full wall of south-facing windows that flood the space with natural light and showcase the lush greenery outside. The gourmet kitchen is equipped with granite countertops, stainless steel appliances, a gas stove, ample cabinetry, and a walkthrough pantry—perfect for everyday living and entertaining. A main floor office and powder room add convenience and flexibility to the layout. Upstairs, the oversized primary bedroom is filled with natural light from its south-facing windows and offers a peaceful retreat with a walk-in closet and spacious ensuite with a skylight and heated floors. Two additional bedrooms and a bonus room with vaulted ceilings complete the upper level. The basement has been professionally started with subfloor & electrical and offers a blank canvas ready for your personal touch and creative vision. The fully landscaped backyard is a true summer showpiece, bursting with a vibrant variety of perennials and flowering bulbs that offer beauty throughout the season. Additional highlights include an oversized garage, central air conditioning, central vacuum, and unbeatable access to Fish Creek Park and the



Bow Riverâ€”just a short walk away. This home seamlessly combines beauty, functionality, and location. Book your private viewing today!

Built in 2008

**Essential Information**

MLS® #	A2233629
Price	\$799,900
Bedrooms	3
Bathrooms	3.00
Full Baths	2
Half Baths	1
Square Footage	2,227
Acres	0.10
Year Built	2008
Type	Residential
Sub-Type	Detached
Style	2 Storey
Status	Active

**Community Information**

Address	148 Chaparral Valley Terrace Se
Subdivision	Chaparral
City	Calgary
County	Calgary
Province	Alberta
Postal Code	T2X 0L9

**Amenities**

Parking Spaces	4
Parking	Double Garage Attached
# of Garages	2

**Interior**

Interior Features	High Ceilings, Kitchen Island, Open Floorplan, See Remarks
Appliances	Central Air Conditioner, Dishwasher, Gas Stove, Microwave, Range Hood, Refrigerator, Washer/Dryer

Heating	Forced Air, Natural Gas
Cooling	Central Air
Fireplace	Yes
# of Fireplaces	1
Fireplaces	Gas
Has Basement	Yes
Basement	Full, Unfinished

## Exterior

Exterior Features	Playground, Private Yard
Lot Description	Backs on to Park/Green Space, Dog Run Fenced In, Landscaped, No Neighbours Behind, Rectangular Lot
Roof	Asphalt Shingle
Construction	Mixed
Foundation	Poured Concrete

## Additional Information

Date Listed	June 26th, 2025
Days on Market	21
Zoning	R-G

## Listing Details

Listing Office	TREC The Real Estate Company
----------------	------------------------------

Data is supplied by Pillar 9â„¢ MLS® System. Pillar 9â„¢ is the owner of the copyright in its MLS® System. Data is deemed reliable but is not guaranteed accurate by Pillar 9â„¢. The trademarks MLS®, Multiple Listing Service® and the associated logos are owned by The Canadian Real Estate Association (CREA) and identify the quality of services provided by real estate professionals who are members of CREA. Used under license.