

# \$614,900 - 92 Martha's Haven Gardens Ne, Calgary

MLS® #A2233659

**\$614,900**

3 Bedroom, 3.00 Bathroom, 1,469 sqft

Residential on 0.10 Acres

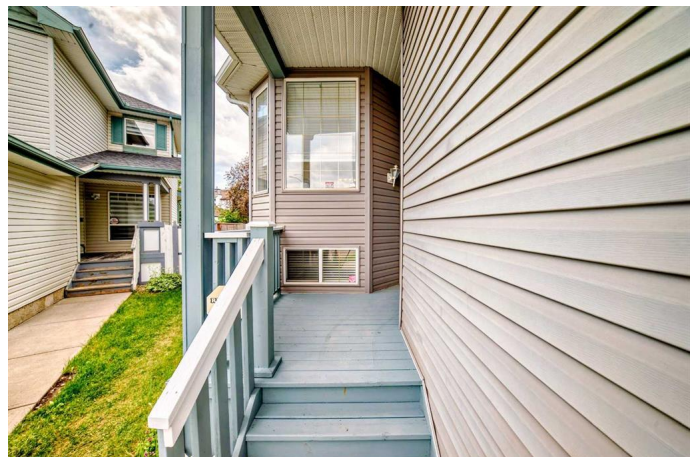
Martindale, Calgary, Alberta

Welcome to a fully renovated 4 level split in the heart of Martindale. This well located property is situated across from a park/playground. The upper level has a very large primary bedroom with a walk in closet. A 5 piece ensuite awaits the new buyers! There is 1 additional bedroom on this level. The kitchen has been updated with quartz counter tops, new cabinets and SS appliances. There is also a large pantry. The dining room is off the kitchen and can accommodate large gatherings. There is a side entrance to come or to access the backyard. The lower level is a walkout at grade and you enter into a large family room with a gas fireplace. There is a bedroom on this level along with a 4 piece bathroom. There is also an entrance to the backyard of which has a fire pit and has a covered area underneath the upper balcony. The home is walking distance to the C-train station in the Community and there is a elementary school steps from this home. Quick access onto McKnight and Metis Trail.

Built in 1998

## Essential Information

MLS® #	A2233659
Price	\$614,900
Bedrooms	3
Bathrooms	3.00
Full Baths	2



Half Baths	1
Square Footage	1,469
Acres	0.10
Year Built	1998
Type	Residential
Sub-Type	Detached
Style	4 Level Split
Status	Active

### Community Information

Address	92 Martha's Haven Gardens Ne
Subdivision	Martindale
City	Calgary
County	Calgary
Province	Alberta
Postal Code	T3J 3W1

### Amenities

Parking Spaces	4
Parking	Double Garage Attached
# of Garages	2

### Interior

Interior Features	Ceiling Fan(s), Central Vacuum, High Ceilings, Jetted Tub, Pantry, Quartz Counters, Separate Entrance
Appliances	Dishwasher, Electric Stove, Refrigerator, Washer/Dryer, Window Coverings
Heating	Forced Air, Natural Gas
Cooling	None
Fireplace	Yes
# of Fireplaces	1
Fireplaces	Basement, Family Room, Gas, Mantle
Has Basement	Yes
Basement	Exterior Entry, Finished, Full, Walk-Out

### Exterior

Exterior Features	Private Yard, Playground
Lot Description	Back Yard, Landscaped, Rectangular Lot, See Remarks
Roof	Asphalt

Construction	Vinyl Siding
Foundation	Poured Concrete

### **Additional Information**

Date Listed	June 23rd, 2025
Days on Market	5
Zoning	R-CG

### **Listing Details**

Listing Office	RE/MAX Real Estate (Mountain View)
----------------	------------------------------------

Data is supplied by Pillar 9â„¢ MLS® System. Pillar 9â„¢ is the owner of the copyright in its MLS® System. Data is deemed reliable but is not guaranteed accurate by Pillar 9â„¢. The trademarks MLS®, Multiple Listing Service® and the associated logos are owned by The Canadian Real Estate Association (CREA) and identify the quality of services provided by real estate professionals who are members of CREA. Used under license.