

# \$219,900 - 356 Northlands Pointe Ne, Medicine Hat

MLS® #A2234161

## \$219,900

2 Bedroom, 1.00 Bathroom, 1,058 sqft

Residential on 0.00 Acres

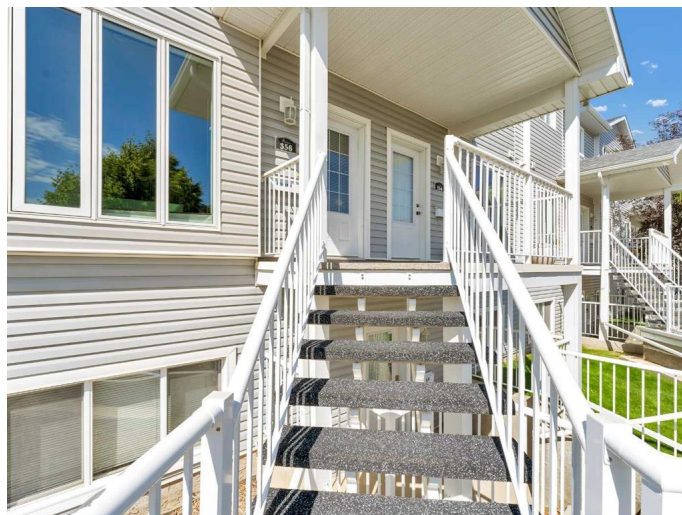
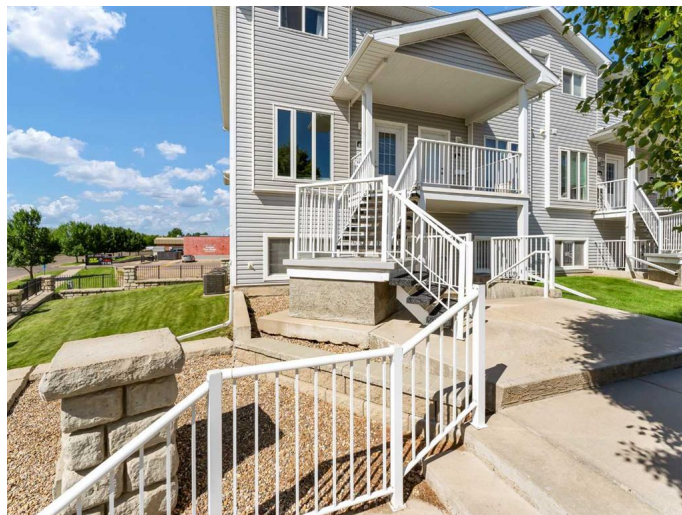
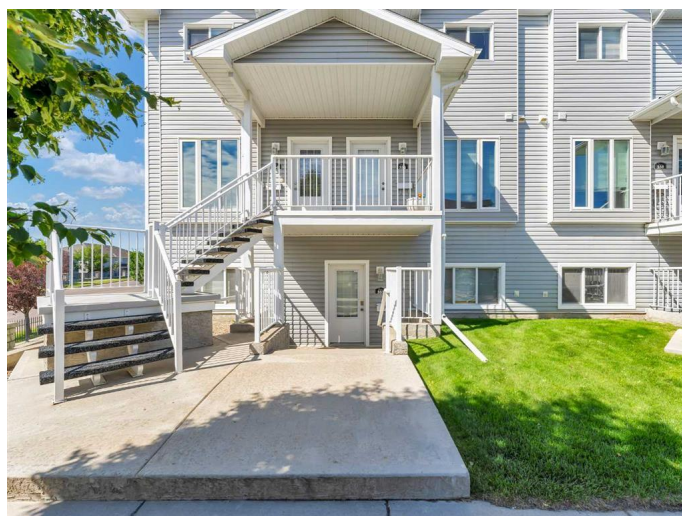
Northeast Crescent Heights, Medicine Hat, Alberta

This bright and welcoming 2-storey corner unit offers a functional layout and plenty of natural light. The main floor features a well-equipped kitchen with a full appliance package, granite countertops, maple cabinetry, and convenient bar seating that flows into the spacious dining area. The owners have transformed where a 2-piece bathroom could go, into a thoughtfully designed pantry, providing excellent additional storage. The plumbing remains intact, offering the option to convert it back into a bathroom if desired. Upstairs, youâ€™™ll find two generously sized bedrooms, including a primary bedroom with a walk-in closet and upgraded blinds. Neutral colors throughout create a warm, move-in-ready atmosphere. Enjoy the convenience of two dedicated front parking stalls, a private rear balcony with additional storage, and low-maintenance living. Ideally located close to schools, parks, shopping, public transit, and the Family Leisure Centre, this home is perfect for first-time buyers, downsizers, or investors.

Built in 2007

## Essential Information

MLS® #	A2234161
Price	\$219,900
Bedrooms	2
Bathrooms	1.00



Full Baths	1
Square Footage	1,058
Acres	0.00
Year Built	2007
Type	Residential
Sub-Type	Row/Townhouse
Style	2 Storey
Status	Active

### Community Information

Address	356 Northlands Pointe Ne
Subdivision	Northeast Crescent Heights
City	Medicine Hat
County	Medicine Hat
Province	Alberta
Postal Code	T1C0C2

### Amenities

Amenities	None
Parking Spaces	2
Parking	Stall

### Interior

Interior Features	Pantry, Vinyl Windows, Walk-In Closet(s)
Appliances	Dishwasher, Microwave, Refrigerator, Stove(s), Washer/Dryer, Window Coverings
Heating	Forced Air
Cooling	Central Air
Basement	None

### Exterior

Exterior Features	Storage
Lot Description	Street Lighting
Roof	Asphalt Shingle
Construction	Mixed
Foundation	None

### Additional Information

Date Listed	June 28th, 2025
-------------	-----------------

Days on Market	11
Zoning	R-MD

## **Listing Details**

Listing Office	ROYAL LEPAGE COMMUNITY REALTY
----------------	-------------------------------

Data is supplied by Pillar 9â„¢ MLS® System. Pillar 9â„¢ is the owner of the copyright in its MLS® System. Data is deemed reliable but is not guaranteed accurate by Pillar 9â„¢. The trademarks MLS®, Multiple Listing Service® and the associated logos are owned by The Canadian Real Estate Association (CREA) and identify the quality of services provided by real estate professionals who are members of CREA. Used under license.