

# \$509,000 - 667 Robinson Avenue, Penhold

MLS® #A2235374

**\$509,000**

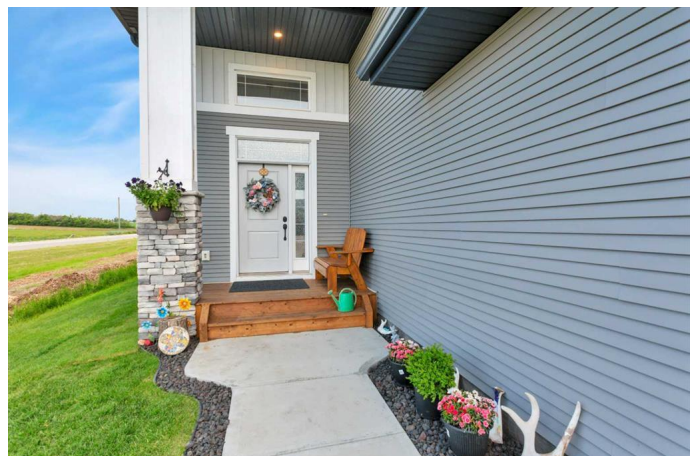
5 Bedroom, 3.00 Bathroom, 1,497 sqft

Residential on 0.11 Acres

Park Place, Penhold, Alberta

667 Robinson ave offers the best views in Penhold! You'll feel like you're in the country looking onto a natural pond at the back and a pasture to the East! The south facing backyard and rear deck is a great place to enjoy sunny afternoon BBQ's and family fun. This lovely modified bi-level starts with a spacious and bright front entry flooded with natural light from the large windows and quick access to the heated double attached garage. The main level is open and airy with a large living room which is connected to the spacious dining area and well designed kitchen. Contemporary cabinets, pantry, stainless appliances, a center island with breakfast bar and ample counter space is sure to please the family chef plus the dining area is big enough for the entire family! There is quality vinyl plank flooring throughout the main plus a full bath and 2 main floor bedrooms - perfect for kids! A short flight of stairs leads to the roomy master bedroom with plenty of room for the largest bed, a full ensuite and walk-in closet. The basement is fully finished with a big rec room, 2 more bedrooms for a total of 5, full bath and storage space. The yard is fully fenced and landscaped with under deck storage, there is central A/C for those hot summer nights and a 220 wire to the deck for a future hot tub! Penhold is a family friendly community with schools and a great rec center, and is minutes to shopping and all amenities!!

Built in 2020



## Essential Information

|                |                   |
|----------------|-------------------|
| MLS® #         | A2235374          |
| Price          | \$509,000         |
| Bedrooms       | 5                 |
| Bathrooms      | 3.00              |
| Full Baths     | 3                 |
| Square Footage | 1,497             |
| Acres          | 0.11              |
| Year Built     | 2020              |
| Type           | Residential       |
| Sub-Type       | Detached          |
| Style          | Modified Bi-Level |
| Status         | Active            |

## Community Information

|             |                     |
|-------------|---------------------|
| Address     | 667 Robinson Avenue |
| Subdivision | Park Place          |
| City        | Penhold             |
| County      | Red Deer County     |
| Province    | Alberta             |
| Postal Code | T0M 1R0             |

## Amenities

|                |  |
|----------------|--|
| Parking Spaces | 2  |
| Parking        | Concrete Driveway, Double Garage Attached, Garage Door Opener, Heated Garage |
| # of Garages   | 2  |

## Interior

|                   |  |
|-------------------|--|
| Interior Features | Breakfast Bar, Kitchen Island, Open Floorplan, Pantry, Recessed Lighting, Vinyl Windows, Walk-In Closet(s) |
| Appliances        | Dishwasher, Dryer, Garage Control(s), Microwave, Refrigerator, Stove(s), Washer, Window Coverings          |
| Heating           | Forced Air, Natural Gas  |
| Cooling           | Central Air  |
| Has Basement      | Yes  |
| Basement          | Finished, Full   |

## Exterior

|                   |   |
|-------------------|---|
| Exterior Features | Other   |
| Lot Description   | Backs on to Park/Green Space, Landscaped, Level |
| Roof              | Shingle   |
| Construction      | Concrete, Stone, Vinyl Siding, Wood Frame       |
| Foundation        | Poured Concrete                                 |

**Additional Information**

|                |                 |
|----------------|-----------------|
| Date Listed    | June 28th, 2025 |
| Days on Market | 4               |
| Zoning         | R1A             |

**Listing Details**

|                |                                    |
|----------------|------------------------------------|
| Listing Office | RE/MAX real estate central alberta |
|----------------|------------------------------------|

Data is supplied by Pillar 9â„¢ MLSÂ® System. Pillar 9â„¢ is the owner of the copyright in its MLSÂ® System. Data is deemed reliable but is not guaranteed accurate by Pillar 9â„¢. The trademarks MLSÂ®, Multiple Listing ServiceÂ® and the associated logos are owned by The Canadian Real Estate Association (CREA) and identify the quality of services provided by real estate professionals who are members of CREA. Used under license.