

# \$319,900 - 114 Eagle Road N, Lethbridge

MLS® #A2259276

**\$319,900**

4 Bedroom, 2.00 Bathroom, 838 sqft

Residential on 0.14 Acres

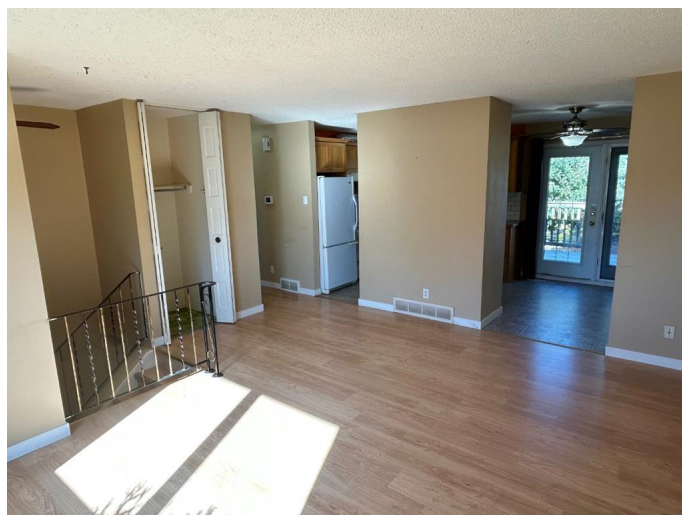
Park Meadows, Lethbridge, Alberta

Loveable bilevel awaiting your personal touch! Located in "the Birds" neighbourhood of Park Meadows this quaint home is situated on a nice deep lot with rear alley access, and has no neighbours behind you. Having 2 bedrooms up and 2 more down, a full bath up and another 2 piece bath down it has just the right amount of space. Some mechanical updates have already been done over the years including high efficiency furnace, A/C, and HW tank. Shingles were replaced around 2012 and still look pretty good too. A private and established back yard offers up the perfect palette for your outdoor living space creation, and great potential for a proper garage. Bring your paint brush, bring your elbow grease and start realizing the potential in THIS affordable package!

Built in 1976

## Essential Information

MLS® #	A2259276
Price	\$319,900
Bedrooms	4
Bathrooms	2.00
Full Baths	1
Half Baths	1
Square Footage	838
Acres	0.14
Year Built	1976



Type	Residential
Sub-Type	Detached
Style	Bi-Level
Status	Active

### Community Information

Address	114 Eagle Road N
Subdivision	Park Meadows
City	Lethbridge
County	Lethbridge
Province	Alberta
Postal Code	T1H 4S6

### Amenities

Parking Spaces	2
Parking	Alley Access, Stall, Off Street, RV Access/Parking

### Interior

Interior Features	See Remarks
Appliances	See Remarks
Heating	High Efficiency, Forced Air, Natural Gas
Cooling	Central Air
Has Basement	Yes
Basement	Finished, Full

### Exterior

Exterior Features	Other
Lot Description	Back Lane, Back Yard, Backs on to Park/Green Space, Front Yard, Landscaped, Lawn, See Remarks, Treed
Roof	Asphalt Shingle
Construction	Concrete, Wood Frame
Foundation	Poured Concrete

### Additional Information

Date Listed	September 23rd, 2025
Days on Market	17
Zoning	R-L

### Listing Details

Listing Office	Royal LePage South Country - Lethbridge
----------------	---

Data is supplied by Pillar 9â„¢ MLS® System. Pillar 9â„¢ is the owner of the copyright in its MLS® System. Data is deemed reliable but is not guaranteed accurate by Pillar 9â„¢. The trademarks MLS®, Multiple Listing Service® and the associated logos are owned by The Canadian Real Estate Association (CREA) and identify the quality of services provided by real estate professionals who are members of CREA. Used under license.